

VAC (VISUAL APPROACH CHARTS) ARE AT THE END.

**DCS**



0

By DGGOOFY



1



# Mirage F1 Ad pacem 1985



MISSION 1 - JUNE 11TH, 1985 - 0600 LT  
WITH YOUR 'BRO IN FLY' FLY FROM INCIRLIK AB (TUR) TO THE 15TH  
SQUADRON AIRBASE : H4 (JOR).





# Mirage F1 Ad pacem 1985



MISSION 1: DISTRIBUTION

JUNE 11TH, 1985/0600 LT

NAME	TACAN	VHUF	UHF	ELEV	RWY	ILS
INCIRLIK AB	21X	8		156	05/23	
H4 AB		4		2257	10/28	

GPS START POSITION: N37° 00.7 E035° 26.2 IFF SETTINGS:

PACKAGE:

NB	AC	ROLE
2	F1	FERRY

MODE1 :00  
MODE3A:4101  
MODE4 :HOLD

ARMAMENT:

TIPS	OUT	INN	CENT
-	-	FT	-

LEG	WAYPOINT	TCN	VOR	HOG	DIST	REMARK
1	INCIRLIK AB	95X	115.40			
2	EXIT EAGLE			207	4	MAX 2500 FT
3	ABM CYPRUS			202	75	
4	JOR AIRSPACE			177	67	
5	INAQURA			177	97	
6	HAIFA			195	18	
7	MAFRAQ			115	65	
8	APPROACH			115	34	
9	H4 AB			70	70	

REMARK:

TAKE OFF: AT RUNWAY END IMMEDIATE LEFT TURN TO EXIT EAGLE!

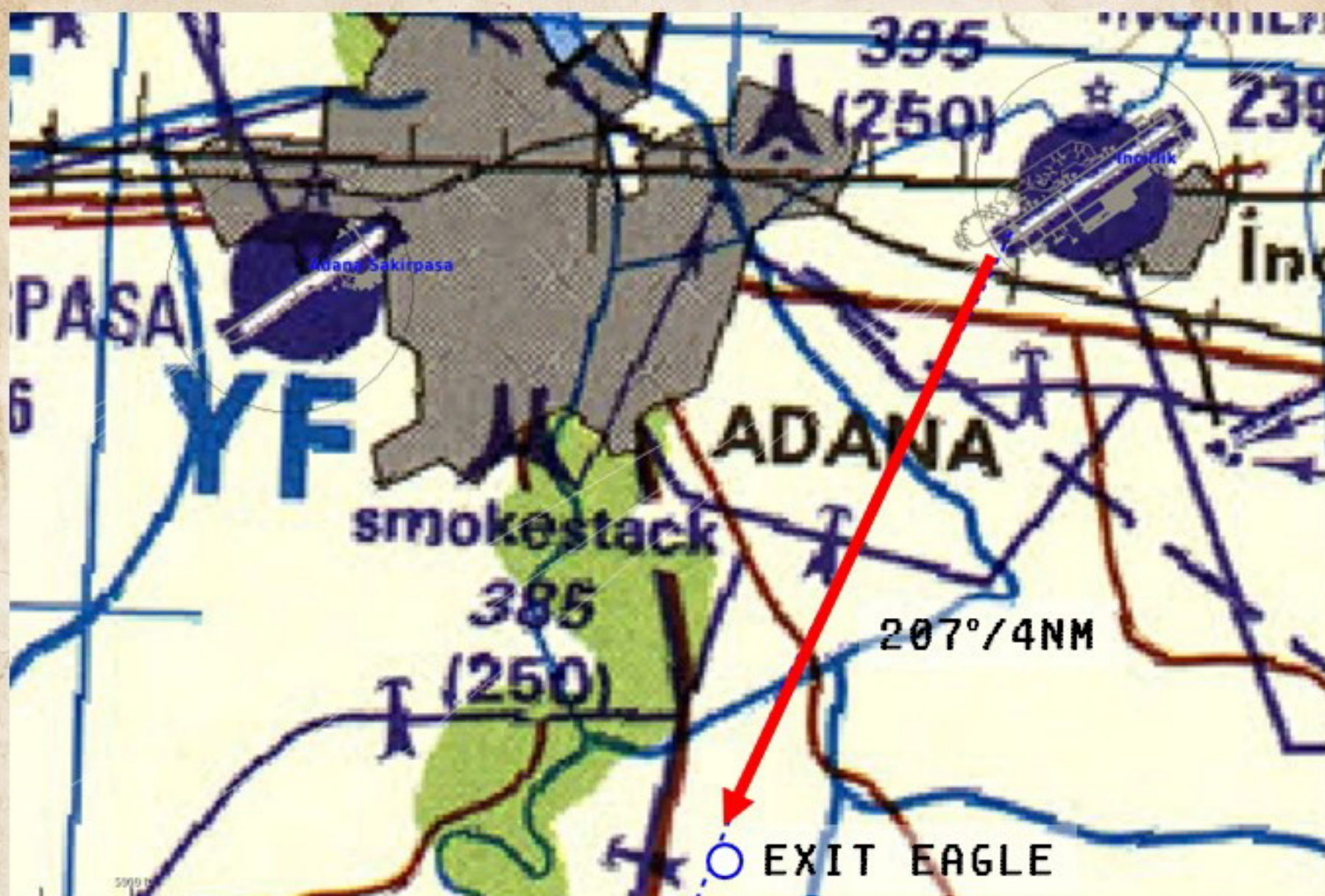
Stay at 300 TAS until wingman AND F5 escort are saddled. Then  
Climb at max MO.7. DO NOT EXCEED MO.8 at cruise alt.

NOTICE:

CH	FREQ	UNIT
1	132.00	WING
4	112.40	H4 AB
5	118.30	MAFRAQ AB
8	122.10	INCIRLIK TWR
23	121.30	NICOSIA RADAR
13	124.50	BEIRUT APPROACH
14	122.60	HAIFA CONTROL TEL AVIV control
15	119.70	ANKARA RADAR



OUTBOUND, INCIRLIK AB:

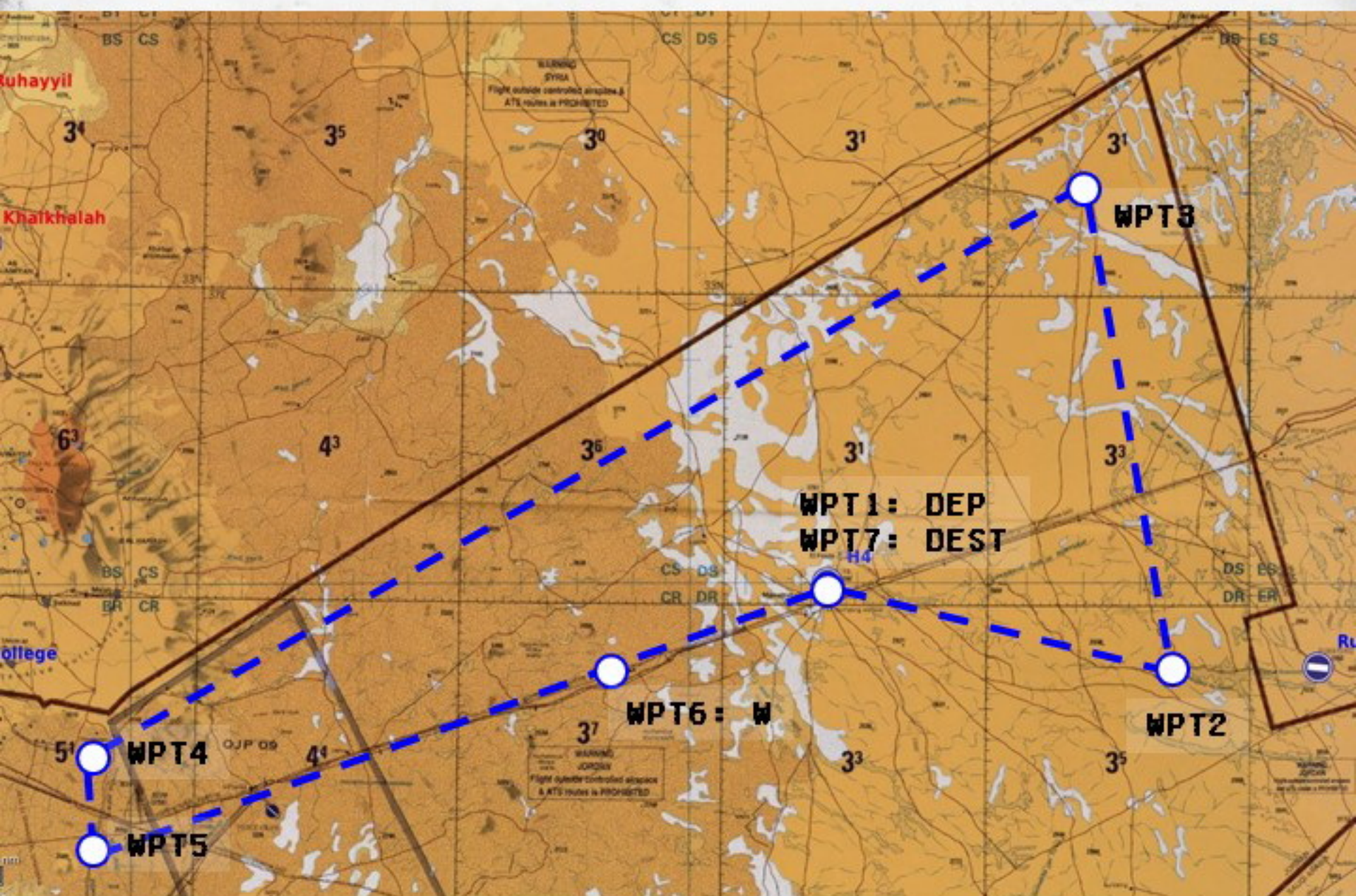




MEET YOUR LEADER. YOU FLY AS WINGMAN AND FOLLOW THE LEADER FOR A CAP MISSION.

SYRIAN MIG'S EXPECTED ALONG THE SYRIAN BORDER. KEEP WEAPONS COLD.

\*\*\*



INS wpt are set from 1 (DEP AD) to 7 (DESTINATION)

When saddled AND off the circuit, he'll climb at MO.7 to our assigned alt.



# Mirage F1 Ad pacem 1985



MISSION 2: PRESENTATION

JUNE 13TH, 1985/1600 LT

NAME	TACAN	VHUF	UHF	ELEV	RWY	ILS
DEP   H4 AB		4		2257	10/28	

ARR   H4 AB		4		2257	10/28	
-------------	--	---	--	------	-------	--

GPS START POSITION: N32° 32.3 E038° 12.4 IFF SETTINGS:

PACKAGE:

NB	AC	ROLE
2	F1	CAP

MODE1 : 11  
MODE3A : 2405  
MODE4 : A

ARMAMENT:

TIPS	OUT	INN	CENT
MAGIC1	-	-	FT

LEG	WAYPOINT	TCN	VOR	HOG	DIST	REMARK
1	H4 AB					
2	WPT 2 - ABM IRQ			102	34	ANGEL 18
3	WPT 3			346	52	
4	WPT 4			239	111	
5	WPT 5			180	10	
6	WHISKEY			71	54	
7	H4 AB			67	23	
8						
9						

NOTES:

DO NOT TAXI BEFORE YOUR LEADER HAS ANNOUNCED '1 IS ROLLING'



# Mirage F1 Ad pacem 1985

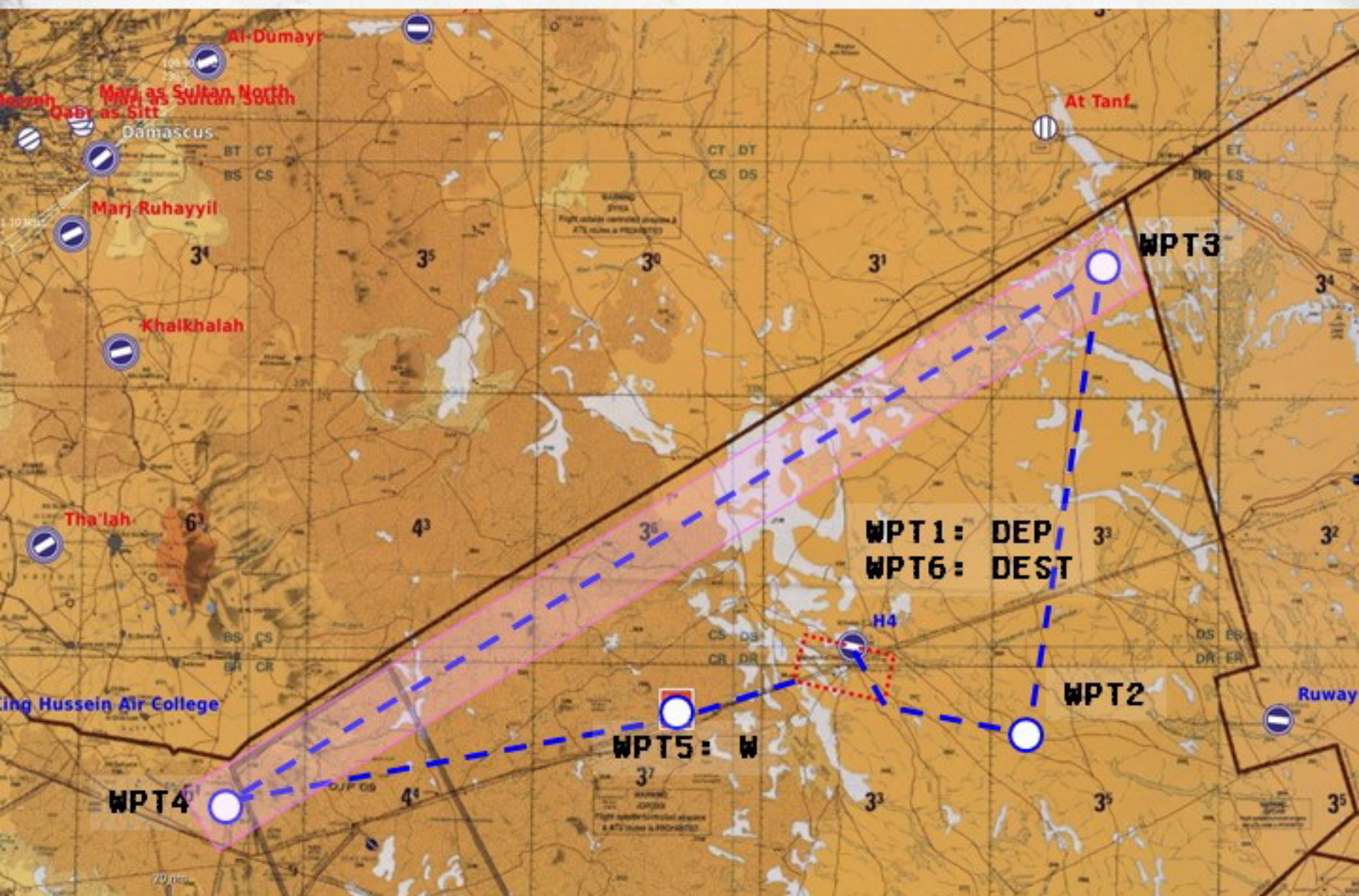


MISSION 3 - JUNE 28TH, 1985 - 0530 LT

A NEW CAP MISSION ALONG THE NORTHERN BORDER BETWEEN WPT3 AND WPT4.  
ANGEL 24.

SYRIAN MIG'S EXPECTED ALONG THE SYRIAN BORDER. KEEP WEAPONS COLD.  
FOLLOW THE LEADER.

...





# Mirage F1 Ad pacem 1985



MISSION 3: PROTECTION

JUNE 28TH, 1985/0530 LT

NAME	TACAN	VHUF	UHF	ELEV	RWY	ILS
DEP   H4 AB		4		2257	10/28	

ARR   H4 AB		4		2257	10/28	
-------------	--	---	--	------	-------	--

GPS START POSITION: N32° 32.3 E038° 12.4 IFF SETTINGS:

PACKAGE:

NB	AC	ROLE
2	F1	CAP

MODE1 : 40  
MODE3A: 2515  
MODE4 : A

ARMAMENT:

TIPS	OUT	INN	CENT
MAGIC1	-	-	FT

LEG	WAYPOINT	TCN	VOR	HOG	DIST	REMARK
1	H4 AB					
2	WPT 2			100	17	ANGEL 10
3	WPT 3			8	51	CAP NE PT ANGEL 24
4	WPT 4			239	114	CAP SW PT ANGEL
5	WHISKEY			49	81	FROM SW POINT
6	H4 AB			71	14	
7						
8						
9						

NOTES:

DO NOT TAXI BEFORE YOUR LEADER HAS ANNOUNCED '1 IS ROLLING'



# Mirage F1 Ad pacem 1985



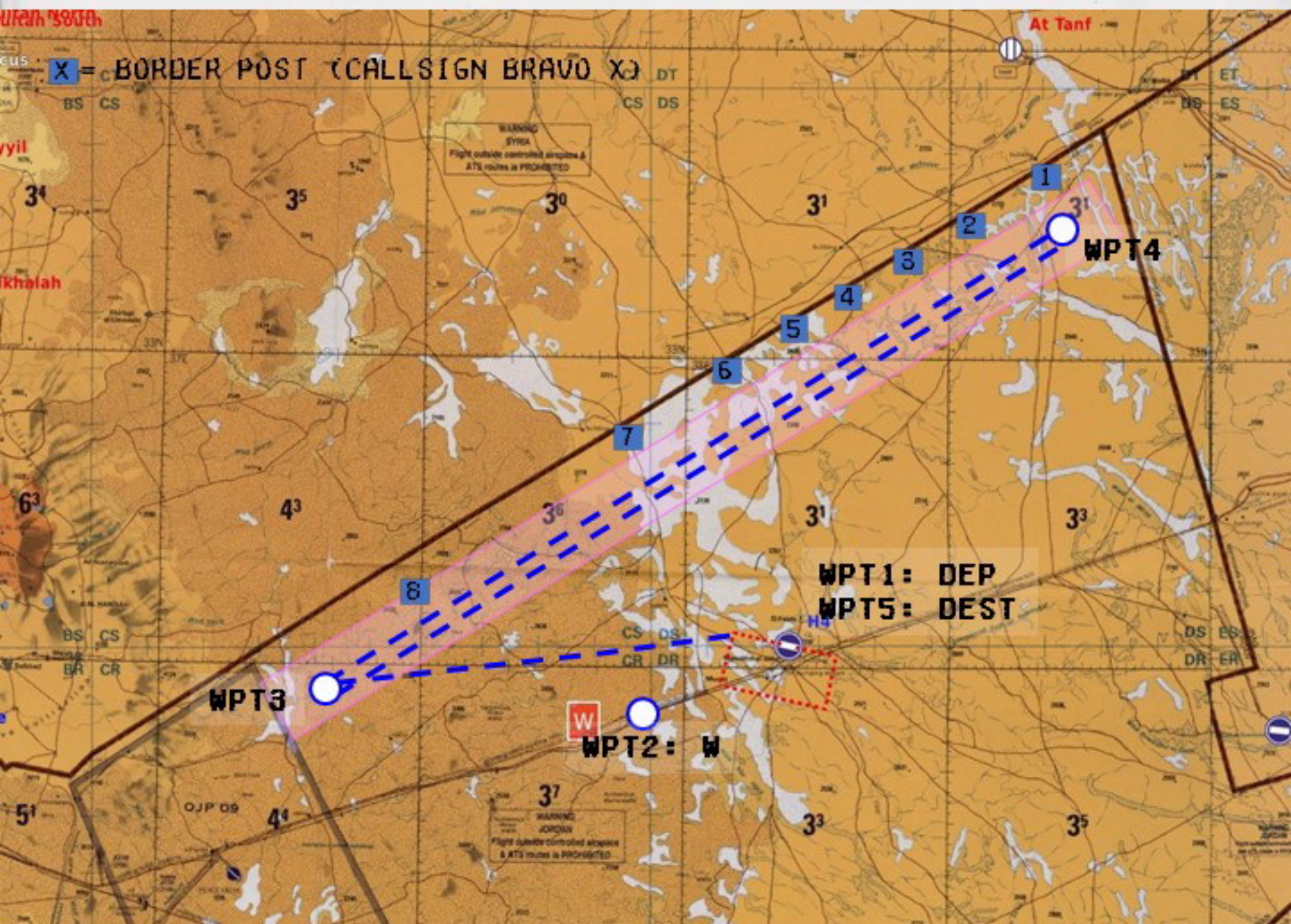
MISSION 4 - JULY 3RD, 1985 - 1430 LT

A NEW CAP MISSION ALONG THE NORTHERN BORDER BETWEEN WPT3 AND WPT4.  
ANGEL 18-24.

SYRIAN MIG'S EXPECTED ALONG THE SYRIAN BORDER. KEEP WEAPONS COLD.  
FOLLOW THE LEADER.

SYRIAN ARE VERY AGGRESSIVES. BE CAUTIOUS.

...





# Mirage F1 Ad pacem 1985



MISSION 4: PROVOCATION

JULY 3RD, 1985/1430 LT

NAME	TACAN	VHUF	UHF	ELEV	RWY	ILS
DEP   H4 AB		4		2257	10/28	

ARR   H4 AB		4		2257	10/28	
-------------	--	---	--	------	-------	--

GPS START POSITION: N32° 32.3 E038° 12.4 IFF SETTINGS:

PACKAGE:

NB	AC	ROLE
2	F1	CAP

MODE1 : 41  
MODE3A: 2405  
MODE4 : B

ARMAMENT:

TIPS	OUT	INN	CENT
MAGIC1	R550F	-	FT

LEG	WAYPOINT	TCN	VOR	HOG	DIST	REMARK
1	H4 AB					
2	WHISKEY					
3	WPT 3			27	53	SW CAP POINT
4	WPT 4			239	113	NE CAP POINT
5	H4 AB					
6						
7						
8						
9						

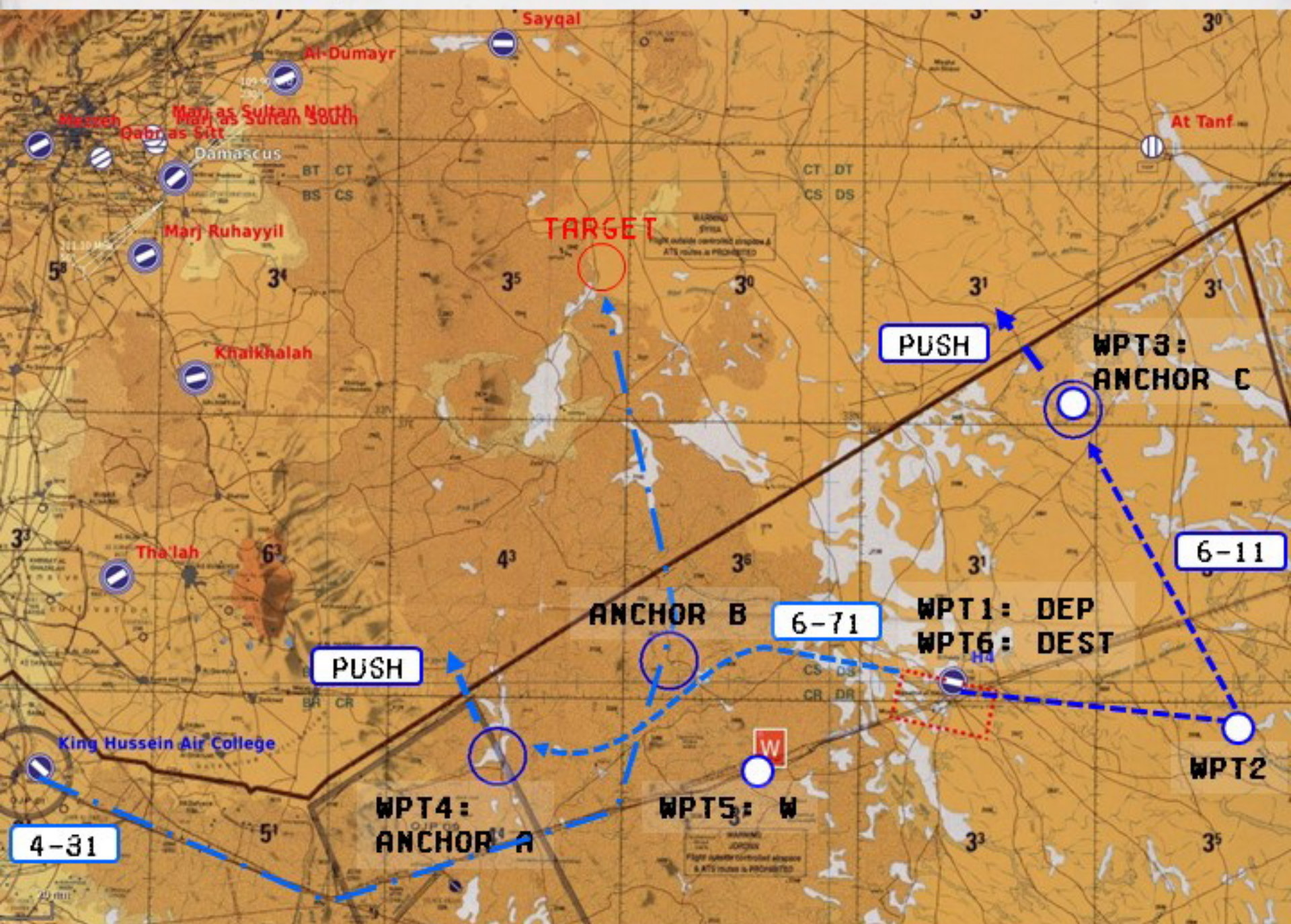
NOTES:

DO NOT TAXI BEFORE YOUR LEADER HAS ANNOUNCED '1 IS ROLLING'



TO STOP SYRIA'S PROVOCATIONS AND SHOW JORDAN'S POWER AND DETERMINATION, THE GENERAL STAFF DECIDED TO STRIKE A MAJOR BLOW DEEP INSIDE SYRIAN TERRITORY. THIS INVOLVED BOMBING A MAJOR SYRIAN ARMY SUPPLY SITE IN THE SOUTH. WHILE JORDANIAN F15 TAKE ON SYRIAN MIGS, 4 F55 WILL FLY AT LOW ALTITUDE, UNDER RADAR COVER, TO BOMB THE SITE.

PUSH TIME: 0600 LT.



No need to stay in formation with G-11 on orbit at anchor Charlie.



# Mirage F1 Ad pacem 1985



MISSION 5: NEUTRALISATION

JULY 5TH, 1985/0530 LT

	NAME	TACAN	VHUF	UHF	ELEV	RWY	ILS
DEP	H4 AB		4		2257	10/28	

ARR	H4 AB		4		2257	10/28	
-----	-------	--	---	--	------	-------	--

GPS START POSITION: N32° 32.3 E038° 12.4 IFF SETTINGS:

PACKAGE:

NB	CALL	AC	ROLE
2	6-11/4	F1	SWEEP/CAP
2	6-71/3	F1	SWEEP/CAP
4	4-31-4	F5	BOMBING

MODE1 : 73  
MODE3A: 2571  
MODE4 : B

ARMAMENT:

TIPS	OUT	INN	CENT
MAGIC1	-	R530EM	FT

LEG	WAYPOINT	TCN	VOR	HOG	DIST	REMARK
1	H4 AB					
2	WPT 2			98	30	
3	ANCHOR CHARLIE			332	40	ANGEL 22 - ORBIT
4	ANCHOR ALPHA			239	73	
5	WHISKEY			220	50	FROM WPT 3 CHARLIE
6	H4 AB					
7						
8						
9						

NOTES:

DO NOT TAXI BEFORE YOUR LEADER HAS ANNOUNCED '1 IS ROLLING'  
NO NEED TO STAY IN FORMATION ON ORBIT.

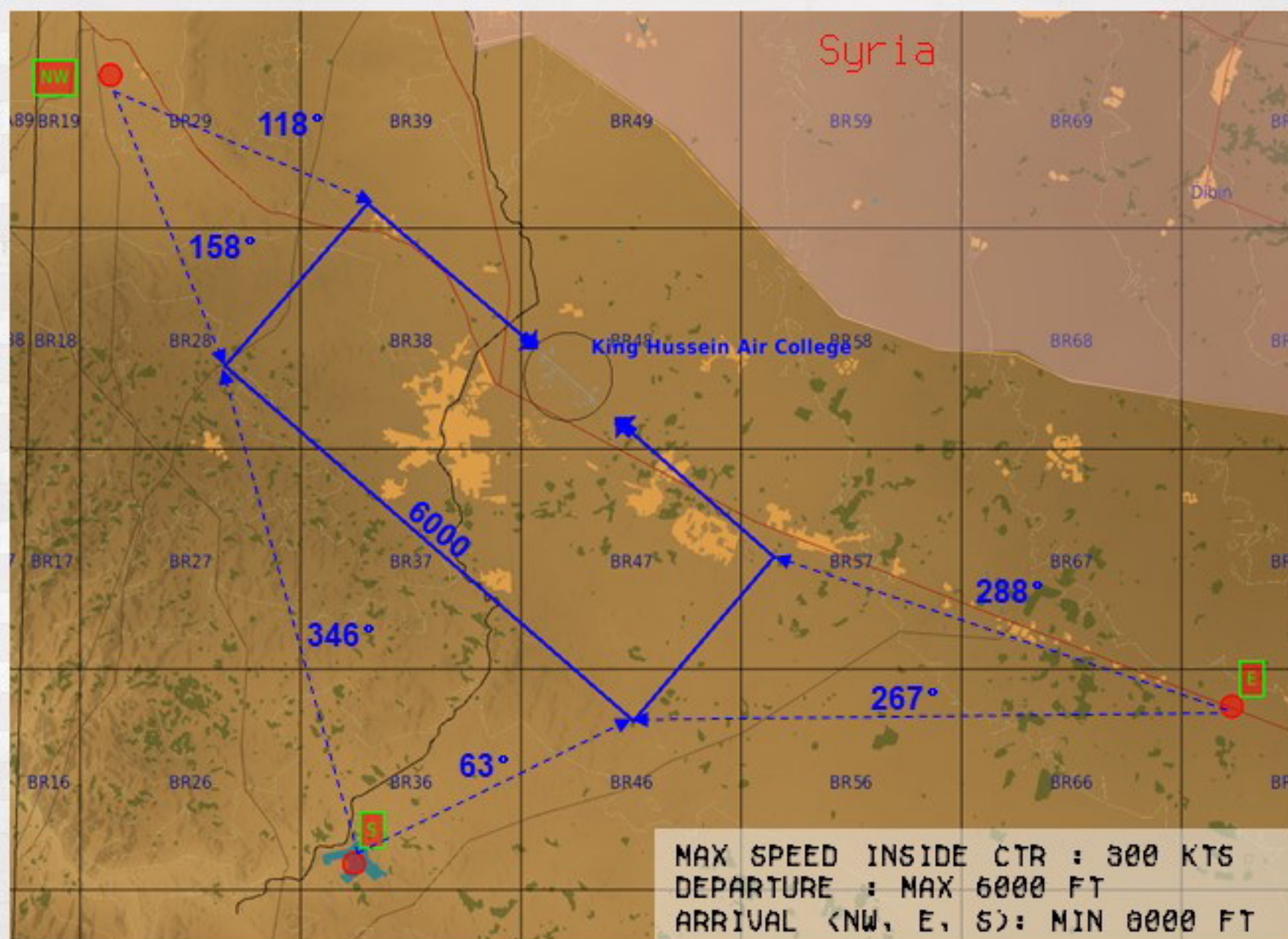


THE 15TH SQUADRON MOVED TO MAFRAQ.

AIRSPACE SHOULD BE SAFE.



MAFRAQ VISUAL APPROACH CHART





# Mirage F1 Ad pacem 1985



MISSION 6: RELOCALISATION

JULY 22TH, 1985/1630 LT

	NAME	TACAN	VHUF	UHF	ELEV	RWY	ILS
DEP	H4 AB		4		2257	10/28	
ARR	H4 AB		4		2257	10/28	

GPS START POSITION: N32° 32.3 E038° 12.4 IFF SETTINGS:

PACKAGE:

NB	CALL	AC	ROLE
2	6-11/4	F1	FERRY
2	6-71/3	F1	FERRY
2	6-41/2	F1	FERRY
2	6-21/2	F1	FERRY
2	6-51/4	F1	FERRY

MODE1 : 00  
MODE3A: 2401  
MODE4 : HOLD

ARMAMENT:

TIPS	OUT	INN	CENT
MAGIC1	-	-	FT EMPTY
FUEL LOAD 80%			

LEG	WAYPOINT	TCN	VOR	HOG	DIST	REMARK
1	H4 AB					
2	END UPWIND					
3	WHISKEY			236	18	
4	WPT4			253	48	PIPELINE ROAD
5	ECHO			291	7	ALT 8000 FEET
6	MAFRAQ			298	16	
7						
8						
9						

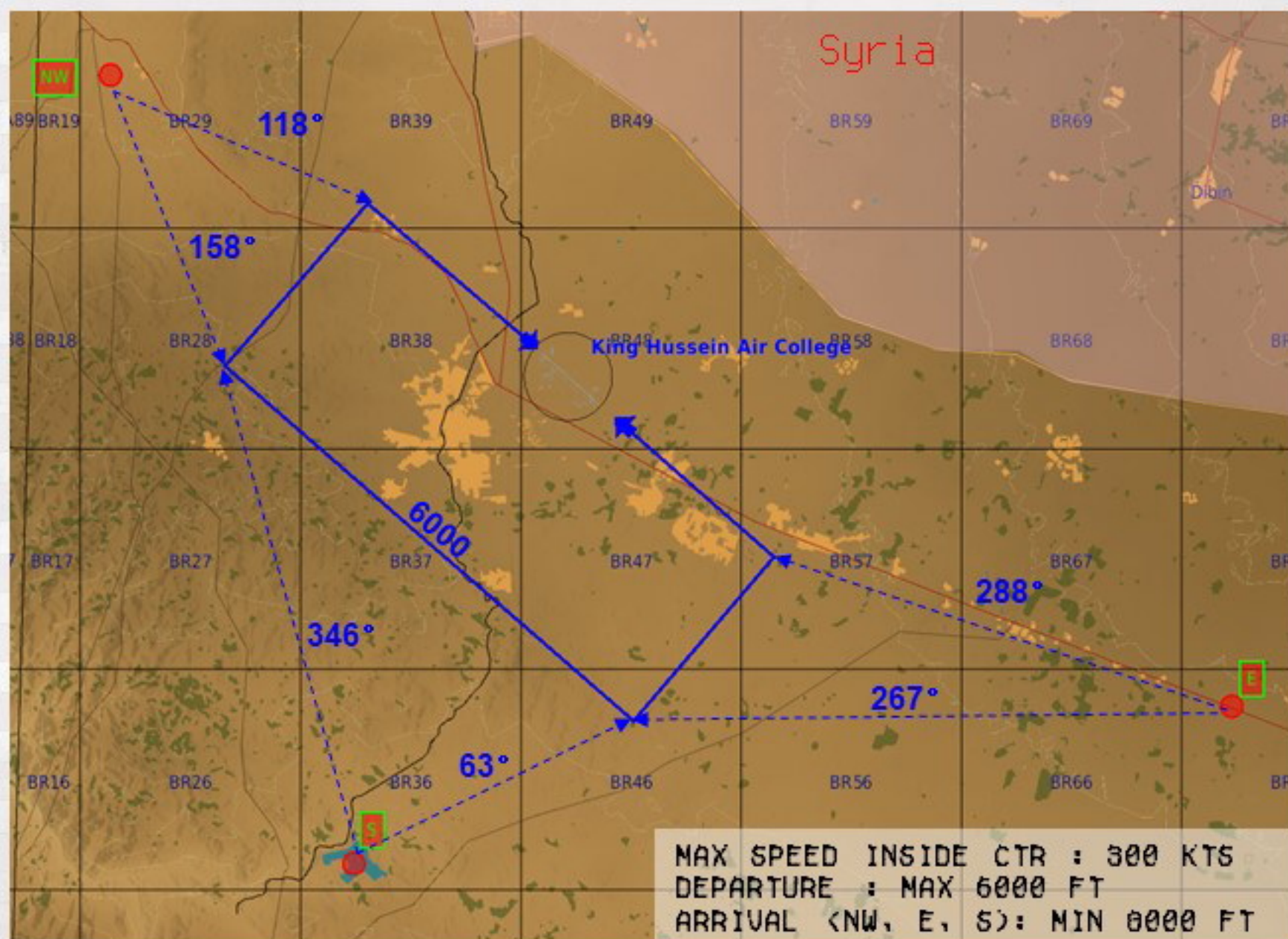
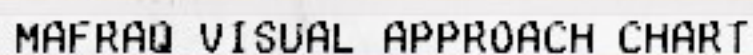
NOTES:

DO NOT TAXI BEFORE YOUR LEADER HAS ANNOUNCED '1 IS ROLLING'  
MAFRAQ CTR : MAX SPEED IS 300 KTS AND MAX ALT 6000 FEET



THE 15TH SQUADRON MOVED TO MAFRØD.

AIRSPACE SHOULD BE SAFE. SOLO FLIGHT.





# Mirage F1 Ad pacem 1985



MISSION 6: RELOCALISATION (BIS) JULY 25TH, 1985/0630 LT

	NAME	TACAN	VHUF	UHF	ELEV	RWY	ILS
DEP	H4 AB		4		2257	10/28	
ARR	H4 AB		4		2257	10/28	

GPS START POSITION: N32° 32.3 E038° 12.4 IFF SETTINGS:  
 MODE1 : 00  
 MODE3A: 2401 *2405*  
 MODE4 : HOLD

## PACKAGE:

NB	CALL	AC	ROLE
<i>21</i>	<i>6-11/4</i>	<i>F1</i>	<i>FERRY</i>
<i>2</i>	<i>6-71/3</i>	<i>F1</i>	<i>FERRY</i>
<i>2</i>	<i>6-41/2</i>	<i>F1</i>	<i>FERRY</i>
<i>2</i>	<i>6-21/2</i>	<i>F1</i>	<i>FERRY</i>
<i>2</i>	<i>6-51/4</i>	<i>F1</i>	<i>FERRY</i>

## ARMAMENT:

TIPS OUT INN CENT  
 MAGIC1 - - FT EMPTY  
 FUEL LOAD 100%

LEG	WAYPOINT	TCN	VOR	HOG	DIST	REMARK
1	H4 AB					
2	END UPWIND					
3	WHISKEY			236	18	
4	WPT4			253	48	PIPELINE RD, ANGEL 16
5	ECHO			291	7	ALT 8000 FEET
6	MAFRAQ			298	16	
7						
8						
9						

## NOTES:

MAFRAQ CTR : MAX SPEED IS 300 KTS AND MAX ALT 6000 FEET



Syria

King Hussein Air College

6000

118°

158°

346°

63°

267°

288°

MAX SPEED INSIDE CTR : 300 KTS  
DEPARTURE : MAX 6000 FT  
ARRIVAL (NW, E, S): MIN 0000 FT

COORDINATES OFFSET FROM RUNWAY CENTER (LAST WPT IN INS)

E 110° / 10.0 NM

NW 302° / 12.7 NM

5 202° / 13.5 NM



# Mirage F1 Ad pacem 1985



MISSION 6 - JULY 25TH, 1985 - 0630 LT

THE 15TH SQUADRON MOVED TO MAFR00.

6-14 REJOINS THE SQUADRON FOLLOWING THE PIPELINE ROAD.

AIRSPACE SHOULD BE SAFE. SOLO FLIGHT.





# Mirage F1 Ad pacem 1985



MISSION 6: RELOCALISATION (BIS) JULY 25TH, 1985/0630 LT

NAME	TACAN	VHUF	UHF	ELEV	RWY	ILS
DEP   H4 AB		4		2257	10/28	
ARR   MAFRAQ AB OJMF		5		2204	07/31	

GPS START POSITION: N32° 32.3 E038° 12.4 IFF SETTINGS:

PACKAGE:

NB	CALL	AC	ROLE
2	6-11/4	F1	FERRY

MODE1 : 00  
MODE3A: 2401  
MODE4 : HOLD

ARMAMENT:

TIPS	OUT	INN	CENT
MAGIC1	-	-	FT EMPTY

LEG	WAYPOINT	TCN	VOR	HOG	DIST	REMARK
1	H4 AB					
2	END UPWIND					
3	WHISKEY			236	18	
4	WPT4			253	48	PIPELINE RD, ANGEL 16
5	ECHO			291	7	ALT 8000 FEET
6	MAFRAQ			298	16	
7						
8						
9						

NOTES:

MAFRAQ CTR : MAX SPEED IS 300 KTS AND MAX ALT 6000 FEET  
AFTER THE MISSION, PARK IN THE HZ (HAZARDOUS ZONE) TO  
UNLOAD/UNARMED WEAPONS. THE PLANE WILL BE PULLED TO HIS HANGAR BY  
THE MAINTAINANCE CREW.



# Mirage F1 Ad pacem 1985



MISSION 7 - AUG 5TH, 1985 - 0630 LT

CAS - TAKE OFF AND HEAD FOR ANCHOR POINT (WPT 4) BEFORE DROPER FLIGHT (2 UH-60A) DROPS OFF THE TROOPS (SPIKE 1 AND 2).

IF NEEDED, SPIKE WILL CALL FOR AN AIR SUPPORT.

No need to stay in formation with G-11 on orbit at anchor point





# Mirage F1 Ad pacem 1985



MISSION 7: COOPERATION

AUG 5TH, 1985/0630 LT

NAME	TACAN	VHUF	UHF	ELEV	RWY	ILS
DEP  MAFRAQ AB OJMF		5		2204	07/31	
ARR  MAFRAQ AB OJMF		5		2204	07/31	

GPS START POSITION: N32° 20.7 E036° 15.9 IFF SETTINGS:

PACKAGE:

NB	CALL	AC	ROLE
2	6-11/4	F1	CAS
2	UZI 11	F16	CAP/SWEEP
2	DROPER	UH60	TROOP TRSP

MODE1 :51  
MODE3A:2204  
MODE4 :B

ARMAMENT:

TIPS	OUT	INN	CENT
MAGIC1	RKT	RKT	FT

LEG	WAYPOINT	TCN	VOR	HOG	DIST	REMARK
1	MAFRAQ AB					
2	NW			304	14	350 KTS, 6000 FT
3	SOUTH TIBERIAS			300	25	ANGEL 12
4	ANCHOR			33	11	ANGEL 12
5	TARGET/SPIKE			360	10	GROUND AT 3500 FT
6	MAFRAQ					
7						
8						
9						

NOTES:

MAFRAQ CTR : MAX SPEED IS 350 KTS AND MAX ALT 6000 FEET  
AFTER THE MISSION, PARK IN THE HZ (HAZARDOUS ZONE) TO  
UNLOAD/UNARMED WEAPONS. THE PLANE WILL BE PULLED TO HIS HANGAR BY  
THE MAINTAINANCE CREW.

SET MRADS ON 030 TO FIRE ROCKETS / 000 FOR GROUND GUN

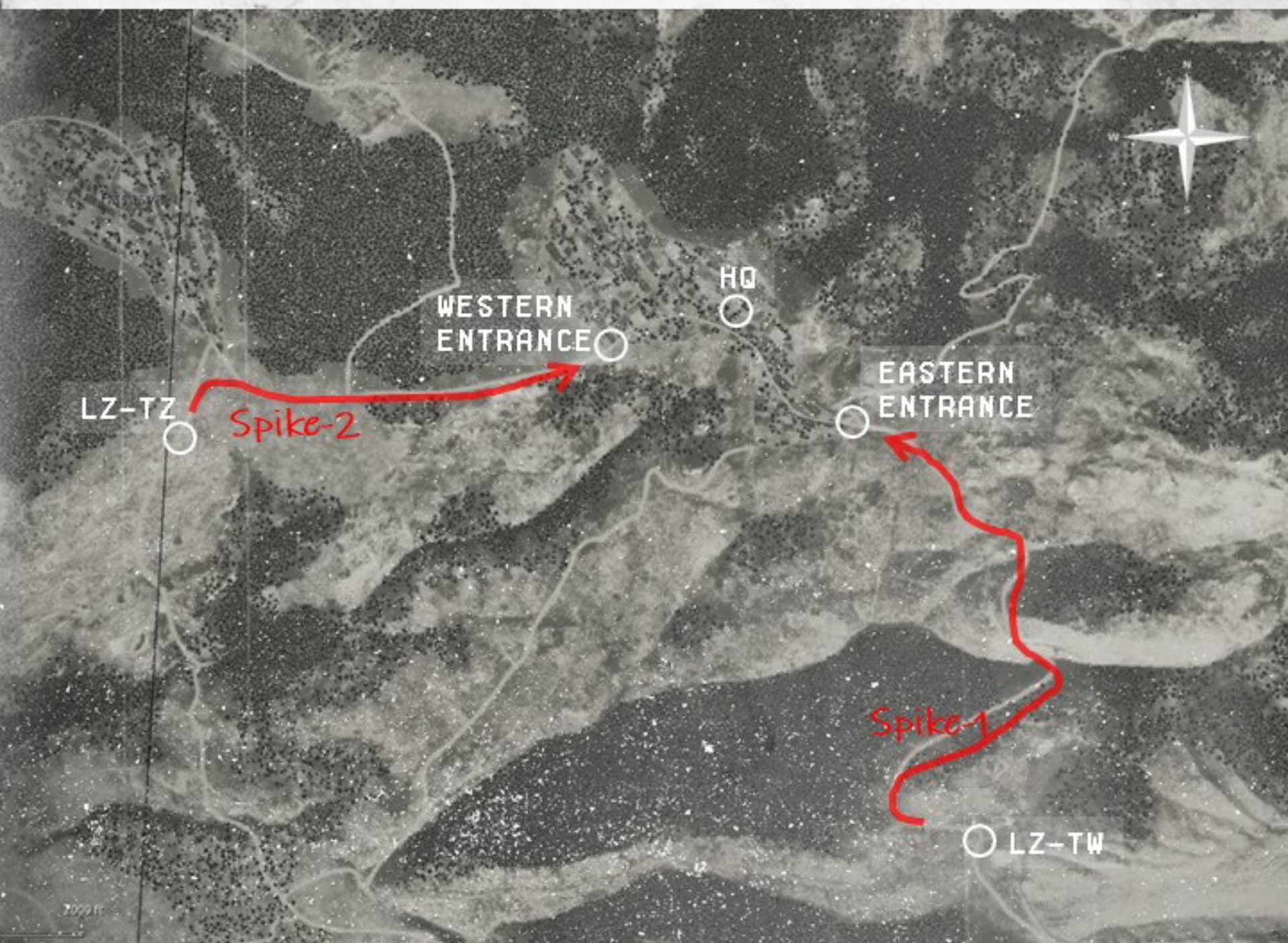


# Mirage F1 Ad pacem 1985



MISSION 7 - AUG 5TH, 1985 - 0630 LT

RECON PICTURE.





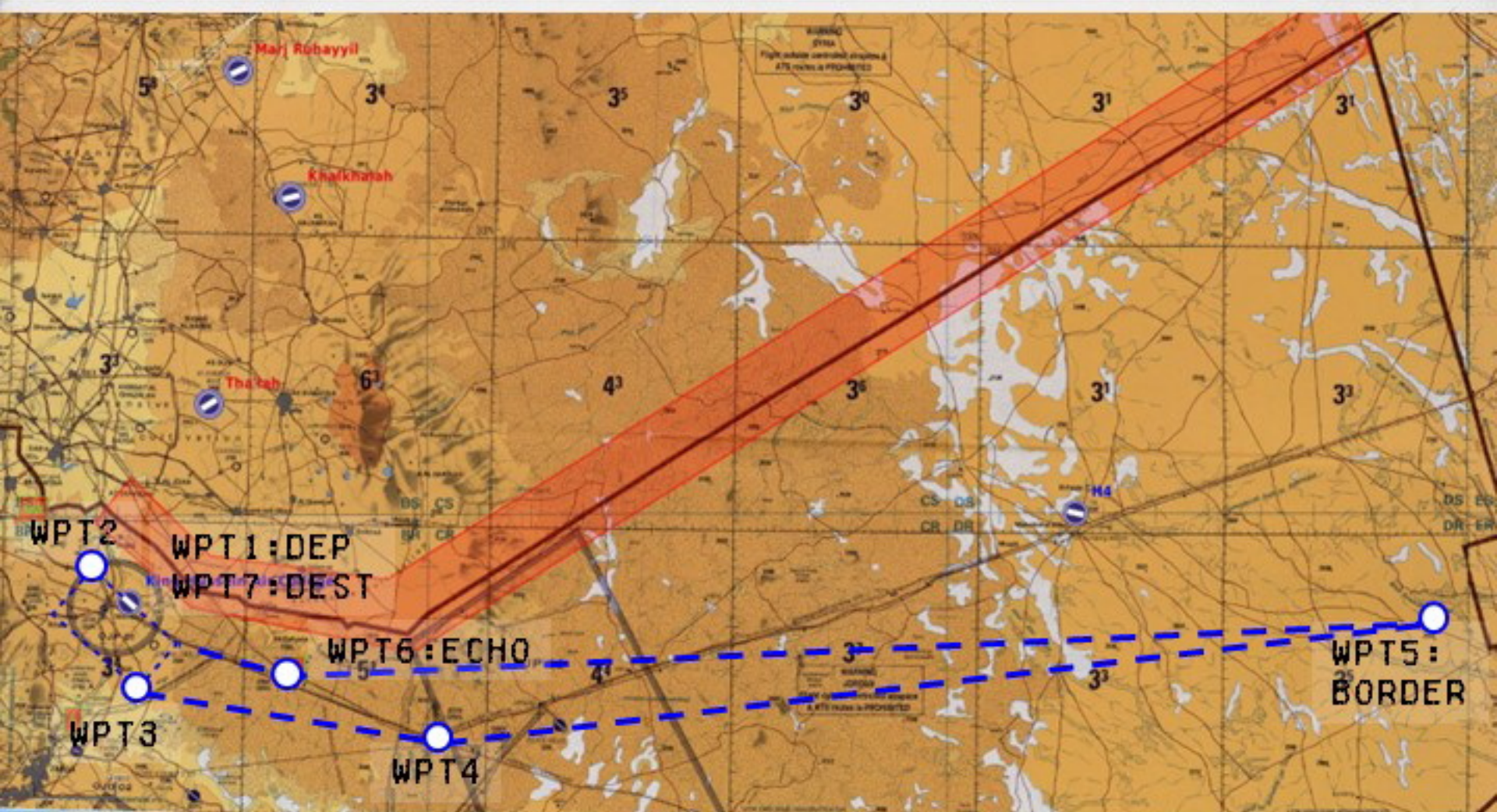
# Mirage F1 *Ad pacem 1985*



MISSION 8 - AUG 10TH, 1985 - 1130 LT

ESCORT THE IL-76 OF THE SOVIET AIR FORCE BACK TO IRAN, FOLLOWING THE FLIGHT PLAN.

TAKE OFF AFTER THE IL-76. REJOIN AND ESCORT TO THE BORDER WITH IRAQ.



Stay at 300 kts max and 6000 feet until 2 rejoins. Then accelerate at Mach 0.7 max to climb and rejoin the IL-76.  
Saddle at his 4.



# Mirage F1 Ad pacem 1985



MISSION 8: RESTITUTION

AUG 10TH, 1985/1130 LT

NAME	TACAN	VHUF	UHF	ELEV	RWY	ILS
DEP  MAFRAQ AB OJMF		5		2204	07/31	

ARR  MAFRAQ AB OJMF		5		2204	07/31	
---------------------	--	---	--	------	-------	--

GPS START POSITION: N32° 20.7 E036° 15.9 IFF SETTINGS:

PACKAGE:

NB	CALL	AC	ROLE
1	SOVIET 7	IL76	TRANSP
2	6-14/5	F1	ESCORT

MODE1 :22  
MODE3A:2211  
MODE4 :A

ARMAMENT:

TIPS	OUT	INN	CENT
MAGIC1	-	-	R530F EM

LEG	WAYPOINT	TCN	VOR	HOG	DIST	REMARK
1	MAFRAQ AB					
2	UPWING				6	300 KTS, 6000 FT
3	END DOWNWIND					MAX 6000 FEET
4	PIPELINE ROAD			100°	31	
5	BORDER			83°	109	
6	ECHO			266°	120	
7	MAFRAQ RWY CT					
8						
9						

NOTES:

MAFRAQ CTR : MAX SPEED IS 300 KTS (350 FOR WINGMAN) AND MAX ALT 6000 FEET



# Mirage F1 Ad pacem 1985



MISSION 9 - AUG 16TH, 1985 - 1800 LT

YOUR TARGET : A HOUSE IN LEBANON, CLOSE TO THE SYRIAN BORDER.

BEFORE WPT4 (LEBANON BOUNDARY) CONTACT BEIRUT CONTROL

ANCHOR AT WPT 5 (TANGO) TO GET INSTRUCTION FROM JTAC (CALLSIGN NASRON 1).





# Mirage F1 Ad pacem 1985



MISSION 9: DECAPITATION

AUG 16TH, 1985/1800 LT

NAME	TACAN	VHUF	UHF	ELEV	RWY	ILS
DEP  MAFRAQ AB OJMF		5		2204	07/31	

ARR  MAFRAQ AB OJMF		5		2204	07/31	
---------------------	--	---	--	------	-------	--

GPS START POSITION: N32° 20.7 E036° 15.9 IFF SETTINGS:

PACKAGE:

NB	CALL	AC	ROLE
1	6-14/5	F1	STRIKE

MODE1 :53  
MODE3A:2251  
MODE4 :A

ARMAMENT:

TIPS	OUT	INN	CENT
MAGIC1	-	-	GBU-12

LEG	WAYPOINT	TCN	VOR	HDG	DIST	REMARK
1	MAFRAQ AB					
2	NW			304	9	300 KTS, 6000 FT
3	TIBERIAS LAKE S			297	24	CLIMB ANGEL 18
4	LEBANON BOUND			13	40	CONTACT BEIRUT
5	ANCHOR TANGO			356	16	CONTACT NASRON 1
6	IP			78	7	
7	TARGET			108	4	N33 35.4 E36.05.0
8	MAFRAC RWY CENTER					
9						

NOTES:

MAFRAQ CTR : MAX SPEED IS 300 KTS AND MAX ALT 6000 FEET

Stay at 300 kts max and 6000 feet until 2 rejoins. Then accelerate at Mach 0.7 max to climb.

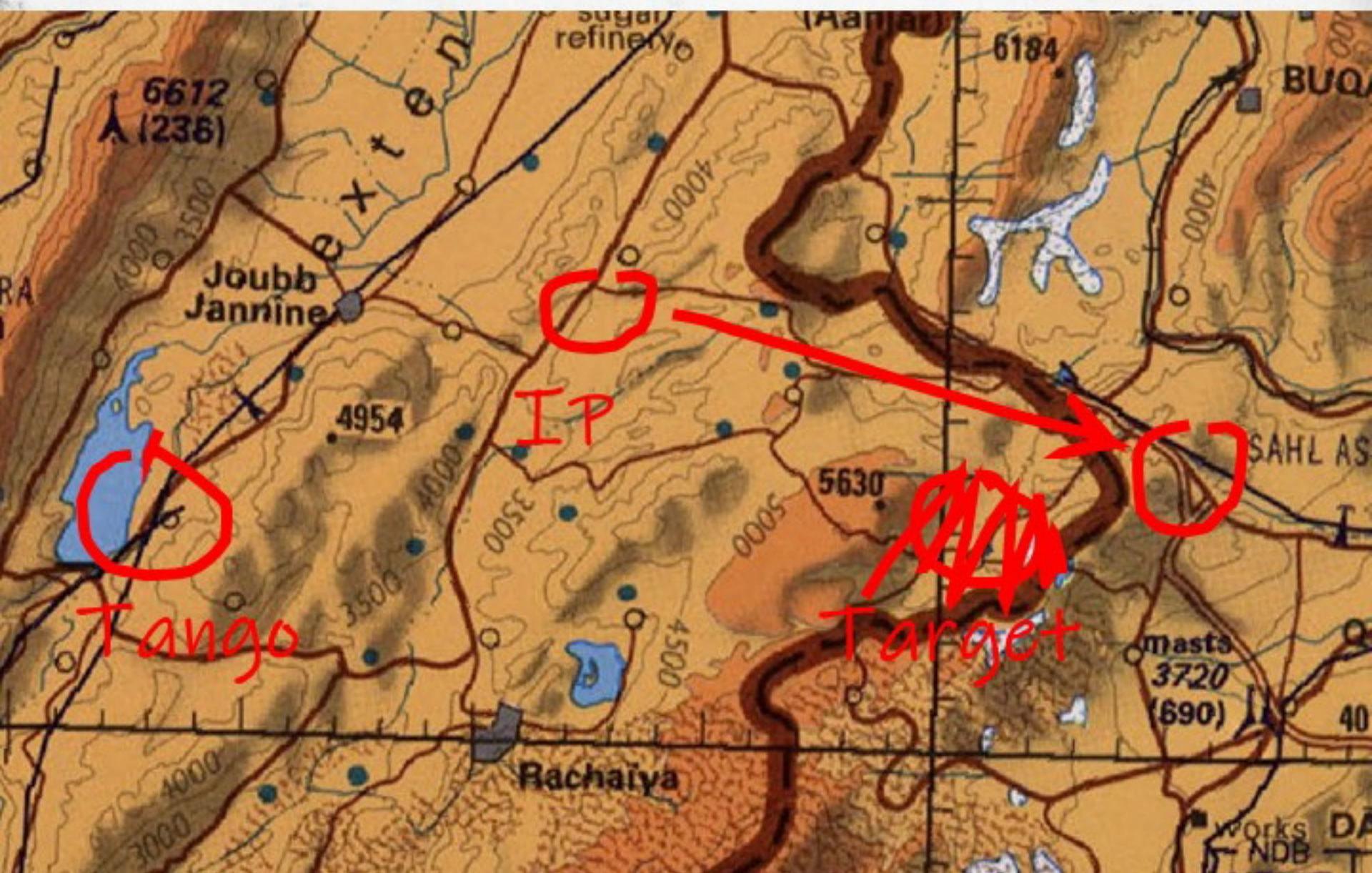
Nasron 1 is our JTAC. Fun fact : Nasron means Eagle in Arabic!

**PICKLE: 4 NM TO TARGET WPT. Alt 12000, speed M0.8!**

After strike, go back to Tango before flying back in formation!



# Mirage F1 Ad pacem 1985



5	ANCHOR TANGO			356	16	CONTACT NASRON 1	
6	IP			78	7		
7	TARGET			108		N33 35.4 E36.05.0	



# Mirage F1 Ad pacem 1985



MISSION 10 - SEPT 5TH, 1985 - 0700 LT

FLIGHT WITH A 4 SHIPS TO OUR NEW BASE FOR 6 MONTHS : RAYAK (LEB).  
YOU LEAD THE GROUP.

ORBIT OVER THE AIRFIELD BEFORE LEAVING MAFRAQ FOLLOWING THE FLIGHT  
PLAN.





# Mirage F1 Ad pacem 1985



MISSION 10: RELOCALISATION II

SEPT 5, 1985, 0700 LT

NAME	TACAN	VHUF	UHF	ELEV	RWY	ILS
------	-------	------	-----	------	-----	-----

DEP	MAFRAQ AB OJMF		5		2204	07/31
-----	----------------	--	---	--	------	-------

ARR	RAYAK AB		7		2934	04/22
-----	----------	--	---	--	------	-------

GPS START POSITION: N32° 20.7 E036° 15.9 IFF SETTINGS:

PACKAGE:

NB	CALL	AC	ROLE
4	6-14	F1	FERRY

MODE1 : 01  
MODE3A: 2215  
MODE4 : B

ARMAMENT:

TIPS	OUT	INN	CENT
MAGIC1	-	S530F	FT

LEG	WAYPOINT	TCN	VOR	HOG	DIST	REMARK
-----	----------	-----	-----	-----	------	--------

1	MAFRAQ AB					
---	-----------	--	--	--	--	--

2	NW			304	9	300 KTS, 6000 FT
---	----	--	--	-----	---	------------------

3	TIBERIAS LAKE S			297	24	CLIMB ANGEL 16
---	-----------------	--	--	-----	----	----------------

4	LEBANON BOUND			10	38	TOD
---	---------------	--	--	----	----	-----

5	QUARAOUN LAKE			359	16	
---	---------------	--	--	-----	----	--

6	RAYAK AB			43	22	
---	----------	--	--	----	----	--

7						
---	--	--	--	--	--	--

8						
---	--	--	--	--	--	--

9						
---	--	--	--	--	--	--

NOTES:

MAFRAQ CTR : MAX SPEED IS 300 KTS AND MAX ALT 6000 FEET  
DESCENT AT M0.7, -2500 FT/MIN.

After takeoff, fly until 4 says "rolling" then start a left hand orbit over the airfield at 6000 feet (speed 300 kts), at 20-25° and wait until all 3 pilots saddled.



# Mirage F1 Ad pacem 1985



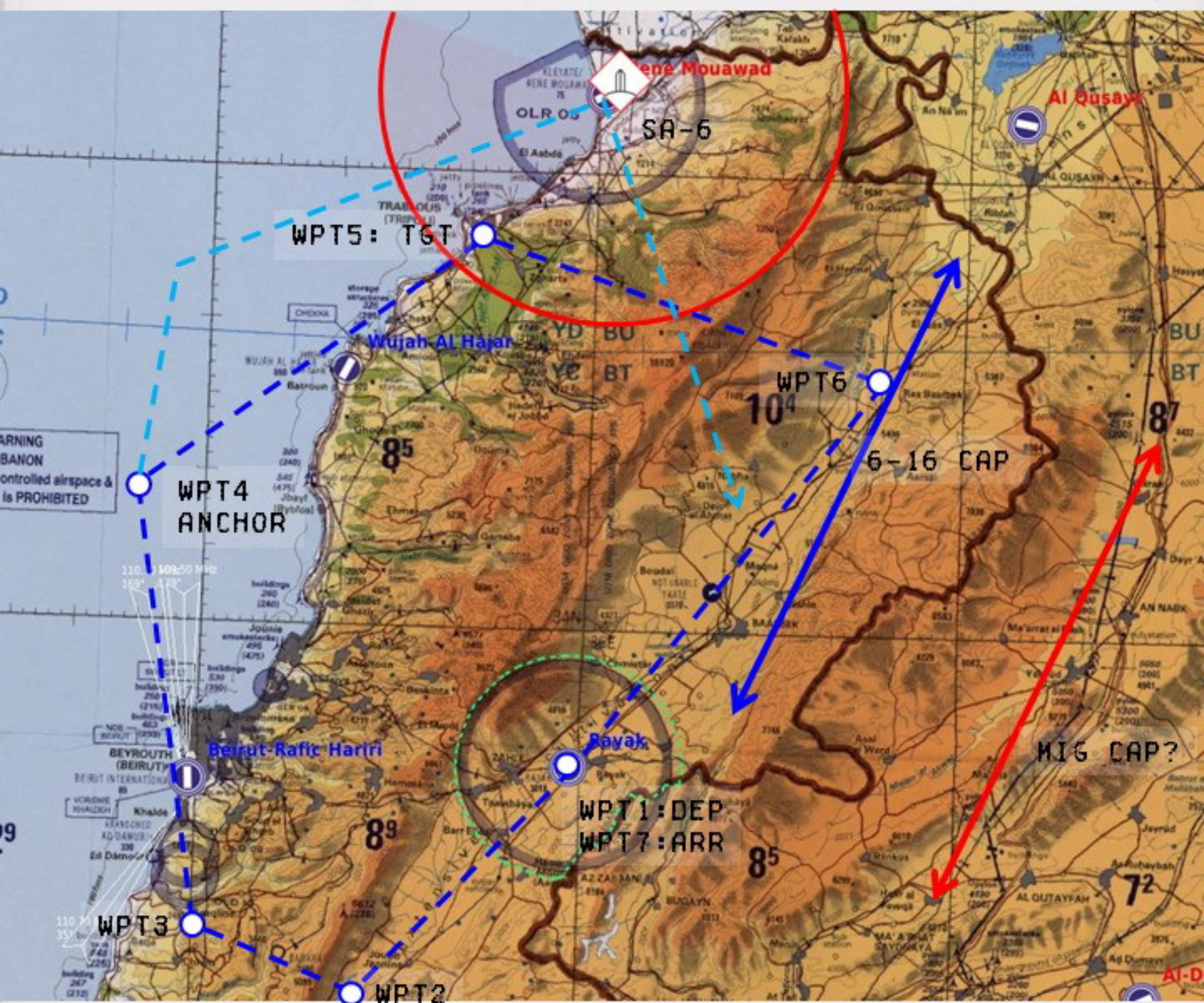
MISSION 11 - SEPT 8TH, 1985 - 0900 LT

TAKE OFF AND ANCHOR WITH 6-15 AT WPT 4.

WAIT FOR ORDERS FROM CALYPSO.

6-15 GOES FIRST AND SWEEP THE SA-6 POSITION AT QOLEIAT (FORMER NAME OF RENE MOUAWAD).

6-14 (PLAYER), AIMS THE REBEL CAMP.









# Mirage F1 Ad pacem 1985



MISSION 11: RECUPERATION

SEPT 8, 1985, 0900 LT

	NAME	TACAN	VHUF	UHF	ELEV	RWY	ILS
DEP	RAYAK AB		7		2934	04/22	

ARR	RAYAK AB		7		2934	04/22	
-----	----------	--	---	--	------	-------	--

GPS START POSITION: N33° 51.5 E036° 00.2

IFF SETTINGS:

PACKAGE:

NB	CALL	AC	ROLE
1	6-14	F1	STRIKE
1	6-15	F1	SEAD
2	6-16	F1	CAP

MODE1 : 30

MODE3A : 2041

MODE4 : A

ARMAMENT:

TIPS	OUT	INN	CENT
MAGIC1	SAMP250LD	SAMP250LD	SAMP250LD

LEG	WAYPOINT	TCN	VOR	HOG	DIST	REMARK
1	RAYAK AB					
2	QUARAOUN LAKE			222	20	
3	WPT3			300	13	
4	ANCHOR POINT			355	29	ANGEL 12, M0.7
5	TARGET			56	28	
6	EGRESS POINT			111	28	
7	RAYAK AB			220	31	
8						
9						

NOTES:

Bombing solution :

Mrad set : 180 - Ingress at 8000 feet and 500 kts - 10 nm from wpt5

When the target area is in the reticle, start to descent, maintaining the targets area in the reticle.

Pickle at 10° nose down, 500 kts, 3500 feet ASL



# Mirage F1 Ad pacem 1985



MISSION 12 - SEPT 11TH, 1985 - 1700 LT

THE INSURGENTS HAVE REGROUPED IN AN ABANDONED VILLAGE HALFWAY BETWEEN TRIPOLI AND THE SYRIAN BORDER.

THE 6-14 GROUP IS TASKED WITH BOMBING THE VILLAGE IN ORDER TO ELIMINATE THIS GROUP OF TERRORISTS AND ITS LEADER.

AT ANCHOR POINT (WPT 4). CONTACT CATWOMAN.

AFTER DROPPING THE BOMBS, GAIN ALTITUDE AND MAKE A RIGHTHAND ORBIT TO REPORT.





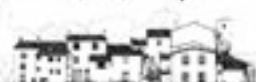
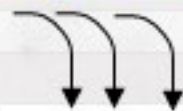
# Mirage F1 Ad pacem 1985



AT WPT 4, ANCHOR, ORBIT LEFT (25-30° BANK ANGLE), ALT 8000 FEET.  
TO INGRESS, TRY TO ENTER THE CONE DRAWN ON THE PLAN SO THAT THE  
LAST LEG TO WPT 6 NEEDS ONLY A SMALL CORRECTION.



FROM INGRESS, DESCENT TO 4000 FEET, MAINTAIN 500 IAS  
PICKLE WHEN YOU ARE OVERHEAD THE VILLAGE (IN THE MIDDLE OF IT).





# Mirage F1 Ad pacem 1985



MISSION 12: ELIMINATION

SEPT 11, 1985, 1700 LT

NAME	TACAN	VHUF	UHF	ELEV	RWY	ILS
DEP RAYAK AB		7		2934	04/22	

ARR RAYAK AB		7		2934	04/22	
--------------	--	---	--	------	-------	--

GPS START POSITION: N33° 51.5 E036° 00.2 IFF SETTINGS:

PACKAGE:

NB	CALL	AC	ROLE
2	6-14	F1	STRIKE

MODE1 :23  
MODE3A:2022  
MODE4 :B

ARMAMENT:

TIPS	OUT	INN	CENT
MAGIC1	SAMP400HD	SAMP400HD	SAMP400HD

LEG	WAYPOINT	TCN	VOR	HDG	DIST	REMARK
1	RAYAK AB					
2	QUARAOUN LAKE			222	20	
3	WPT3			290	16	ANGLE 12 ABM BEIRUT
4	ANCHOR POINT			18	38	ANGLE 8, M0.65
5	INGRESS			70	14	ANGLE 6, 500 IAS
6	TARGET			70	10	500 IAS
7	EGRESS POINT			123	17	
8	RAYAK AB			220	33	
9						

NOTES:

AFTER DROPPING, ORBIT RIGHT TO REPORT RESULT.

Bombing solution :

600-1000 feet AGL, 500 kts, pickle when overhead target.

Ground Gun solution (Canon air-sol) :

Nose 5° down, Mrads 60, 1000 feet AGL

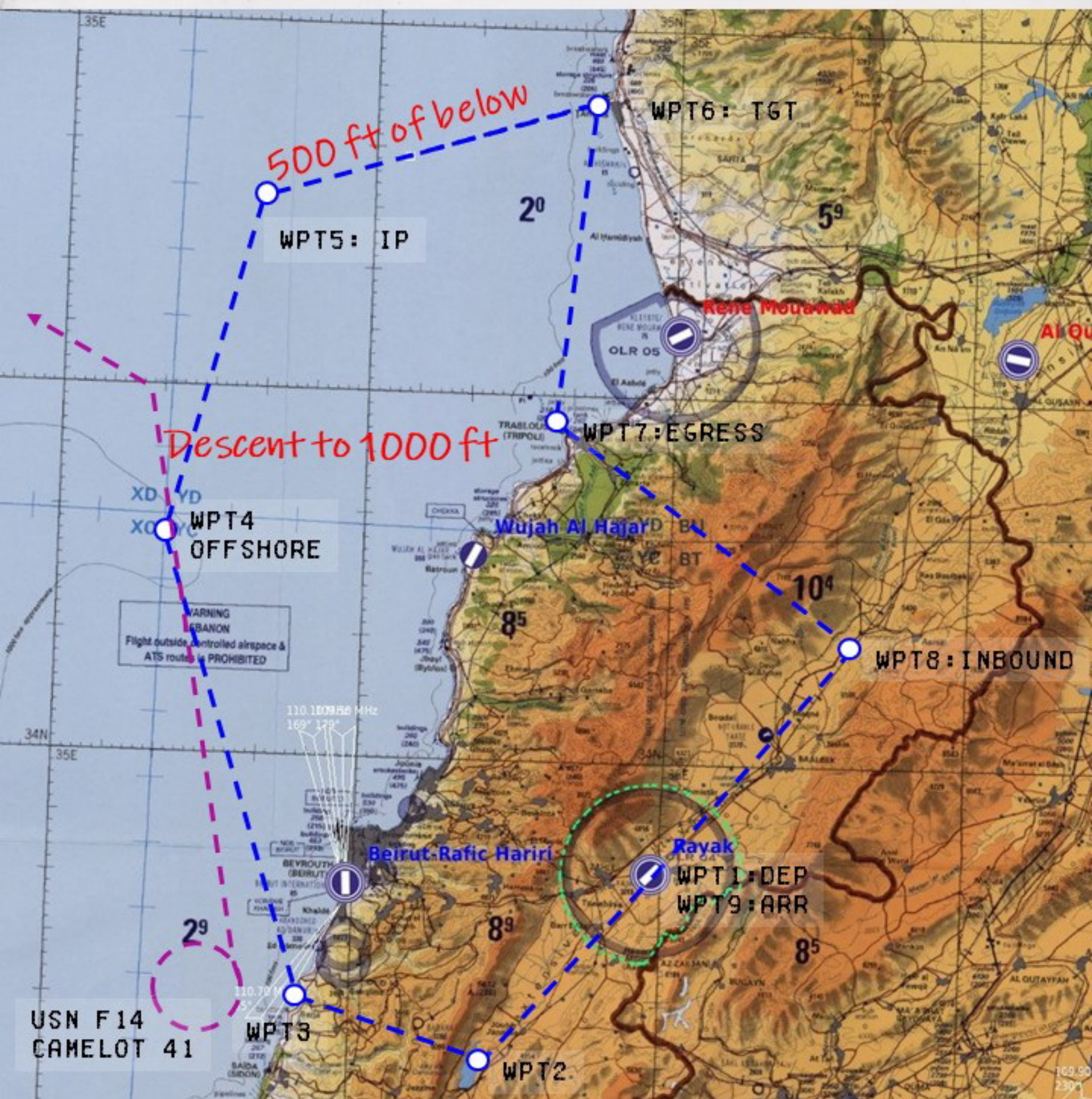
Nose 10° down, mrads 50, 1000 feet AGL



TAKEOFF AS N° 3 WITH 6-11. FLY IN FORMATION TO WPT 3.

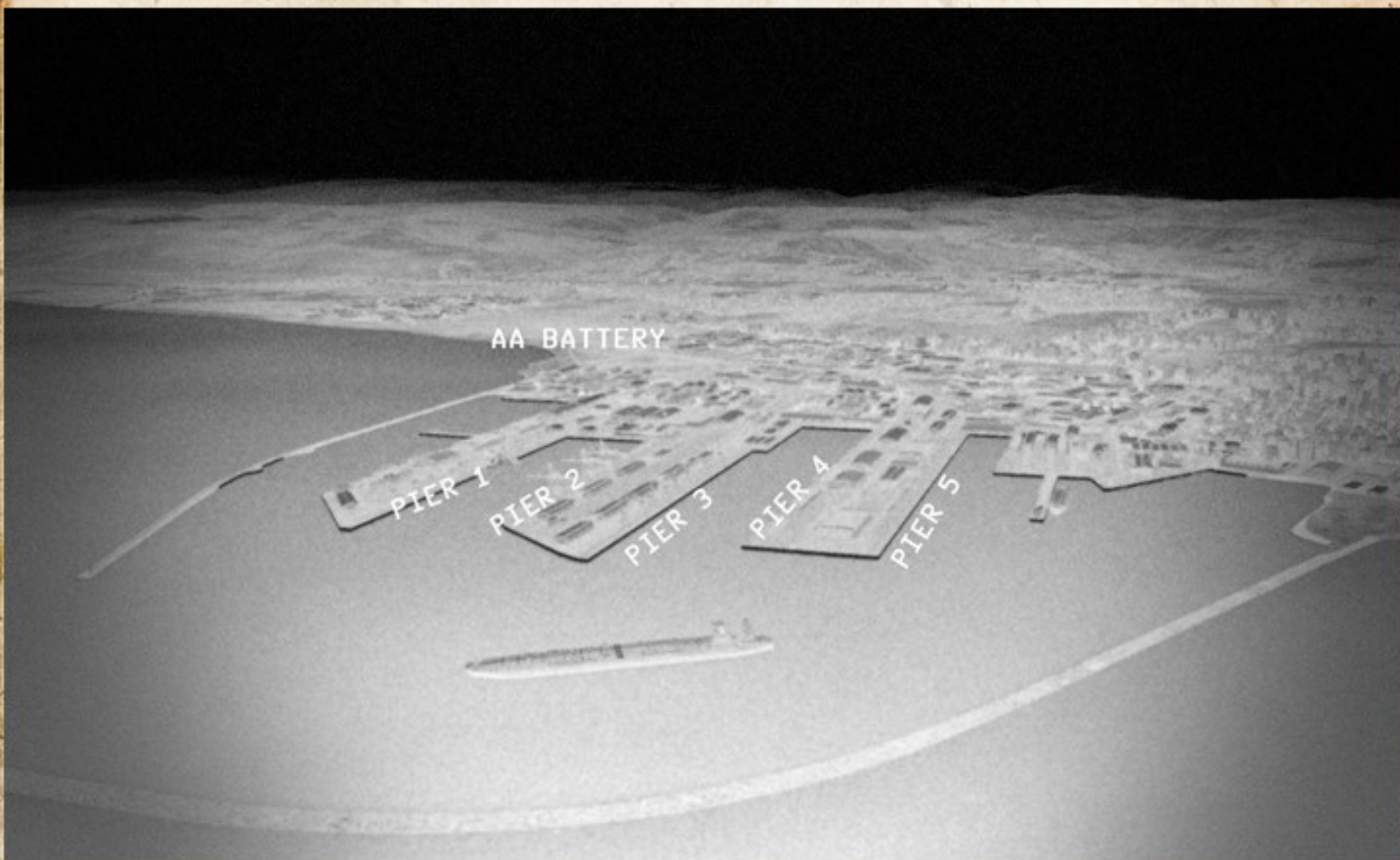
AFTER SEPARATION, DESCENT BELOW 1000 FEET BEFORE INGRESS POINT.

FROM IP DESCENT BELOW 300 FEET TOWARDS TARGETS.





# RECON PICTURE





# Mirage F1 Ad pacem 1985



MISSION 13: ERADICATION

SEPT 25, 1985, 1745 LT

	NAME	TACAN	VHUF	UHF	ELEV	RWY	ILS
DEP	RAYAK AB		7		2934	04/22	
ARR	RAYAK AB		7		2934	04/22	

GPS START POSITION: N33° 51.5 E036° 00.2

IFF SETTINGS:

PACKAGE:

NB	CALL	AC	ROLE
1	6-14	F1	SHIP STRIKE
2	6-16	F1	CAP/SWEEP

MODE1 : 10  
MODE3A: 2005  
MODE4 : B

ARMAMENT:

TIPS	OUT	INN	CENT
MAGIC1	SAM250HD	SAM250HD	4XSAM250HD

LEG	WAYPOINT	TCN	VOR	HOG	DIST	REMARK
1	RAYAK AB					
2	QUARAOUN LAKE			222	20	
3	RENDEZVOUS			290	16	REJOIN USN F14
4	OFFSHORE			344	40	CATWOMAN ON RED 3
5	INGRESS			28	17	MAX 1000 AGL
6	TARGET			75	28	300 AGL - 550 KTS
7	EGRESS POINT			186	28	
8	INBOUND			127	28	
9	RAYAK AB			220	24	

NOTES:

PRESENCE CONFIRMED OF ZU-23  
SA-3 NORTH OF THE HARBOUR

Bombing solution :

Mrad set 150. Speed 550 ias, alt 300 feet. Pickle when the reticle is on the first ship.



AFTER TAKE OFF (AND REJOIN) CLIMB AT ANGEL 10. ABEAM BEIRUT, BEGIN A SLOW DESCENT (-1000 FT/MIN) TO IP.

FROM IP, WINGMAN DOES THE FIRST PASS. PLAYER, 2ND PASS IF NEEDED  
RETURN TO IP (ALT 5000 FT) AND FOLLOW FURTHER INSTRUCTIONS.





# Mirage F1 Ad pacem 1985



MISSION 14: EXPULSION

OCT 15, 1985, 0700 LT

NAME	TACAN	VHUF	UHF	ELEV	RWY	ILS
DEP RAYAK AB		7		2934	04/22	

ARR RAYAK AB		7		2934	04/22	
--------------	--	---	--	------	-------	--

GPS START POSITION: N33° 51.5 E036° 00.2 IFF SETTINGS:

PACKAGE:

NB	CALL	AC	ROLE
2	6-14	F1	SAM STRIKE
2	6-16	F1	CAP/SWEEP
6	72	UH1	TRSP
3	1-15	SA342	GRD ESCORT

MODE1 :20  
MODE3A:2011  
MODE4 :B

ARMAMENT:

TIPS	OUT	INN	CENT
MAGIC1	BLG	BLG	FT

LEG	WAYPOINT	TCN	VOR	HOG	DIST	REMARK
1	RAYAK AB					
2	QUARAOUN LAKE			222	20	
3	BEIRUT S			290	16	ANGEL 10
4	IP			16	56	ALT 5000 AGL
5	TGT			85	17	LOW ALT <500 AGL
6	BULLSEYE					N34° 35.4 E036° 0.7
7	INBOUND			134	26	
8	RAYAK AB			220	24	
9						

NOTES:

ATTACK RUN : FROM IP DESCENT TO 500 FEET (BELOW RADAR COVERAGE)

Bombing solution :

Level attack : Mrad : 130. Speed 550 ias, alt 500 feet. Pickle when the reticle is on the first target.

Pop up attack : Mrad : 77, Speed 550 ias, under 500 feet. 3 nm from the target pop-up : climb 45° at 3000 feet, roll left or right, dive 15°, pickle at 1500 AGL.



Glue to the pattern!



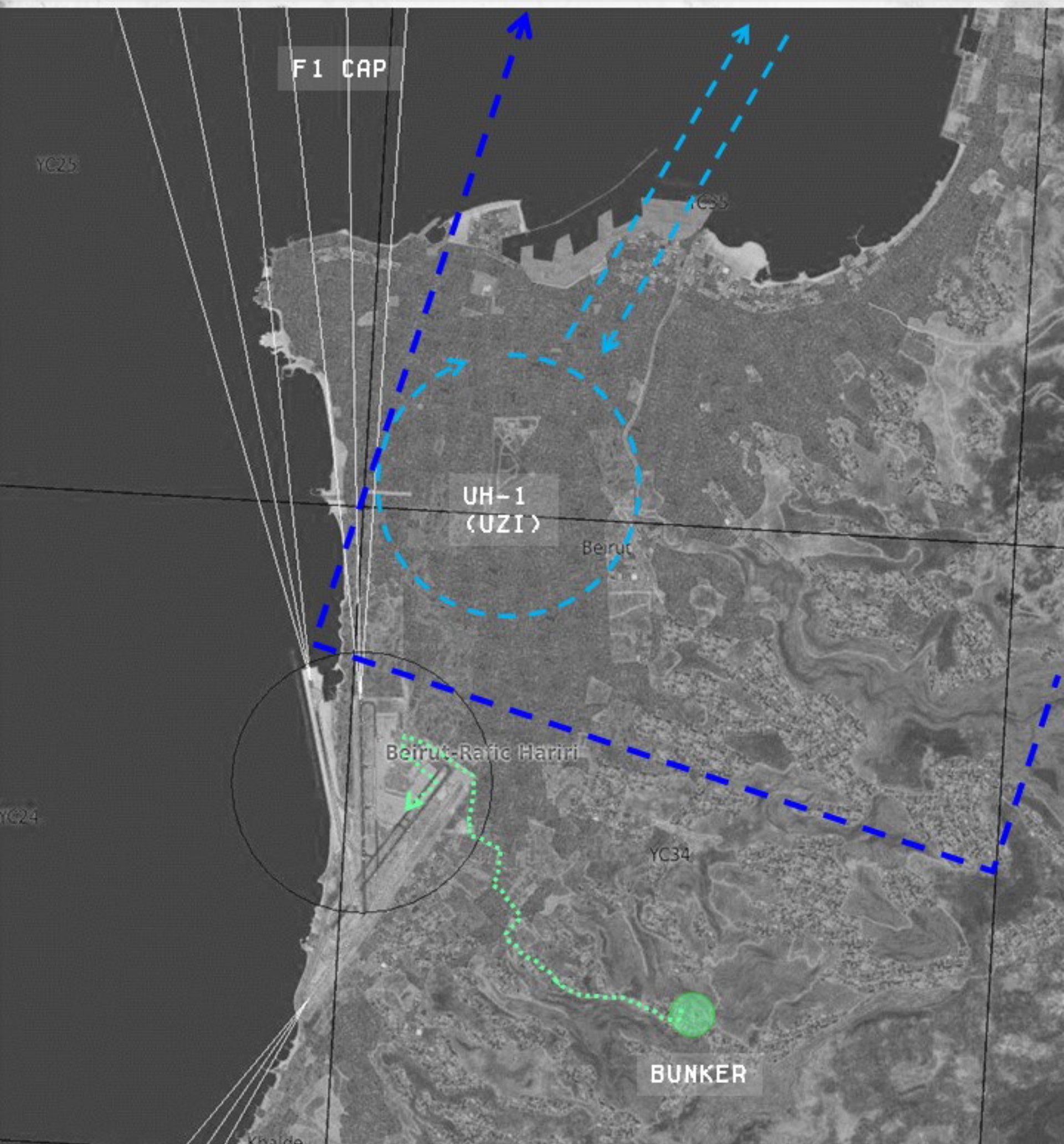


# Mirage F1 Ad pacem 1985



MISSION 15 - NOV 1ST, 1985 - 1600 LT

...





# Mirage F1 Ad pacem 1985



MISSION 15: NEGOCIATION

NOV 1ST, 1985, 1700 LT

	NAME	TACAN	VHUF	UHF	ELEV	RWY	ILS
DEP	RAYAK AB		7		2934	04/22	
ARR	RAYAK AB		7		2934	04/22	

GPS START POSITION: N33° 51.5 E036° 00.2

IFF SETTINGS:

PACKAGE:

NB	CALL	AC	ROLE
2	6-14	F1	CAP UPPER
2	6-16	F1	CAP UPPER
6	UZI	UH1	CAP LOWER
1	111	UH1	GRD ESCORT

MODE1 : 01

MODE3A: 2040

MODE4 : A

ARMAMENT:

TIPS	OUT	INN	CENT
MAGIC1	-	FT	R550EM

LEG	WAYPOINT	TCN	VOR	HOG	DIST	REMARK
1	RAYAK AB					
2	QUARAOUN LAKE			222	20	
3	BEIRUT S			290	16	
4	WPT S			16	56	CAP SOUTH POINT
5	WPT N			85	17	CAP NORTH POINT
6	INBOUND			134	26	
7	RAYAK AB			220	24	
8						
9						

NOTES:



# Mirage F1 Ad pacem 1985



MISSION 16 - NOV 14TH, 1985 - 1300 LT  
BACK HOME TO MAFRAQ AFB





# Mirage F1 Ad pacem 1985



MISSION 16: NORMALISATION

NOV 14TH, 1985, 1300 LT

	NAME	TACAN	VHUF	UHF	ELEV	RWY	ILS
DEP	RAYAK AB		7		2934	04/22	
ARR	MAFRAQ AB		5		2204	07/31	

GPS START POSITION: N33° 51.5 E036° 00.2 IFF SETTINGS:

## PACKAGE:

NB	CALL	AC	ROLE
2	6-14	F1	FERRY
2	6-16	F1	FERRY

MODE1 : 00  
MODE3A: 2071  
MODE4 : A

## ARMAMENT:

TIPS	OUT	INN	CENT
MAGIC1	-	-	FT

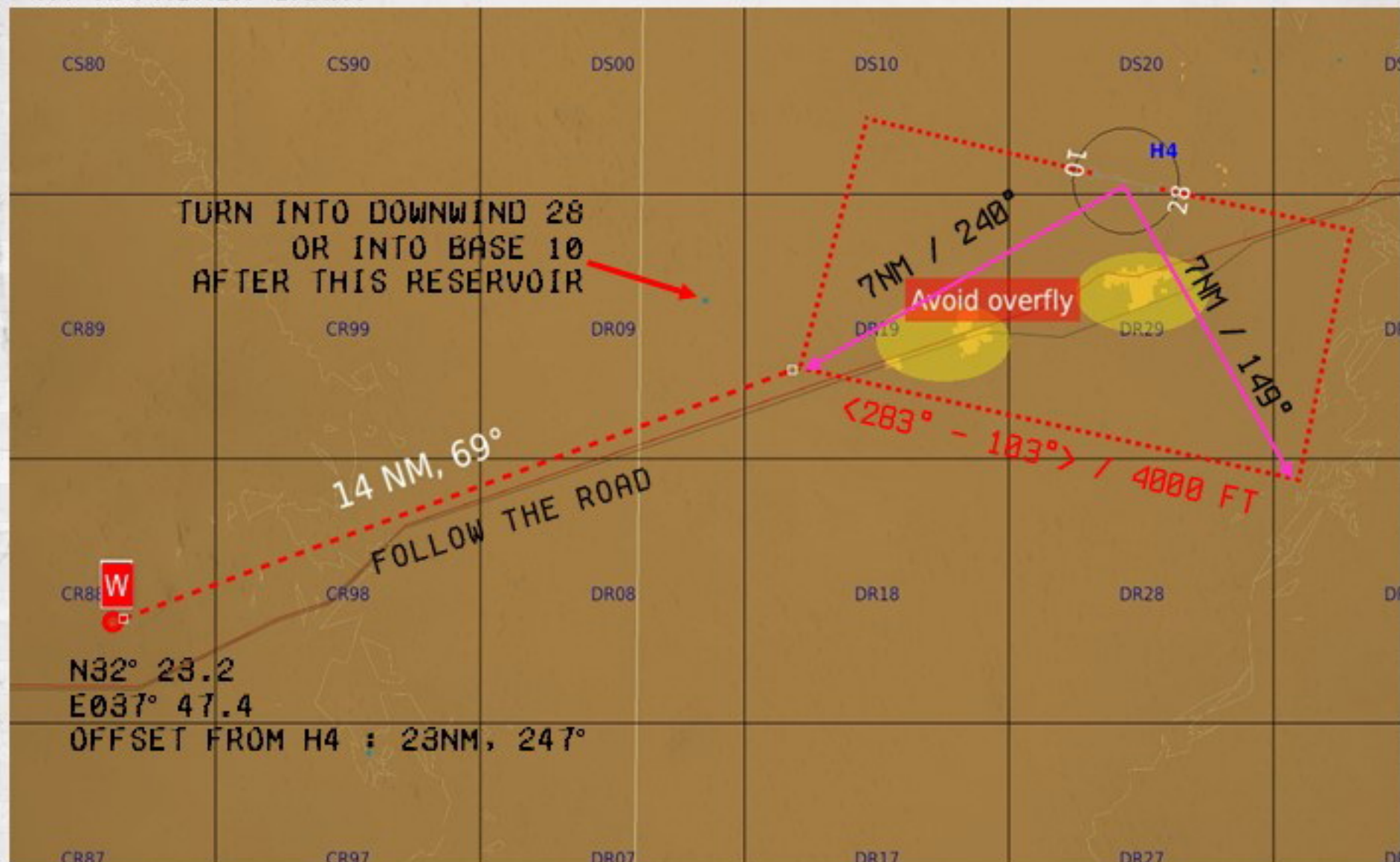
LEG	WAYPOINT	TCN	VOR	HOG	DIST	REMARK
1	RAYAK AB					
2	QUARAOUN LAKE			222	20	
3	BOUNDARY			186	17	FL120
4	IS TIBERIAS			186	38	FL100
5	IRBID			123	14	
6	INW			114	9	ALT 8000 FEET
7	MAFRAQ AB			126	14	
8						
9						

NOTES:





## H4 APPROACH CHART



WINGMAN FOLLOW THE LEADER UNTIL THE END OF THE DOWNWIND THEN ON ORDER 'BREAK FORMATION', EXTEND DOWNWIND AND EXECUTE A OVERHEAD BREAK LANDING TO THE NORTH.

## H4 AD PLAN





Syria

King Hussein Air College

6000

118°

158°

346°

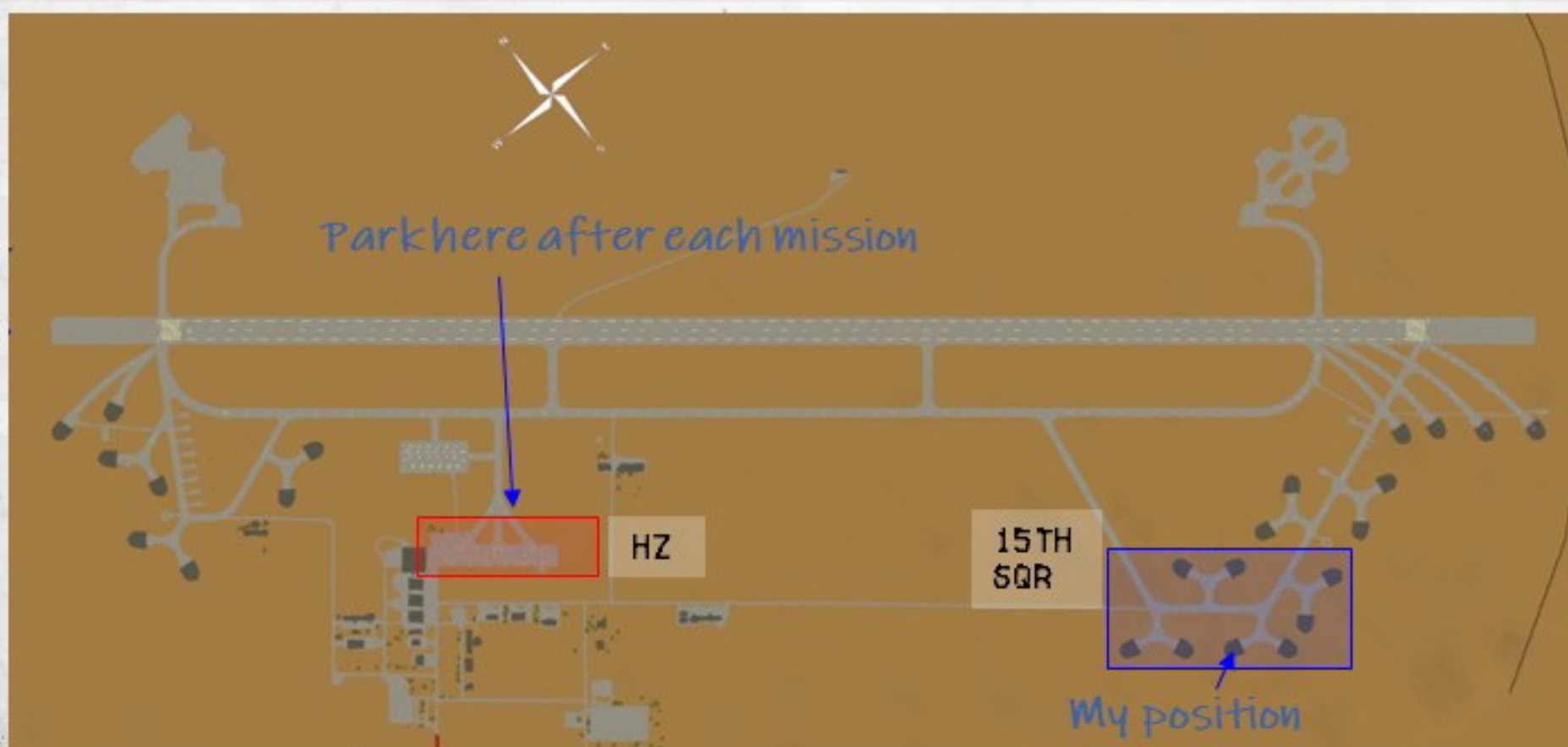
63°

267°

288°

MAX SPEED INSIDE CTR : 300 KTS  
 DEPARTURE : MAX 6000 FT  
 ARRIVAL (NW, E, S): MIN 0000 FT

5 204° / 13.0 NM





# Mirage F1 Ad pacem 1985



RAYAK VISUAL APPROACH CHART. OVERHEAD BREAK AT 4700 FT.

