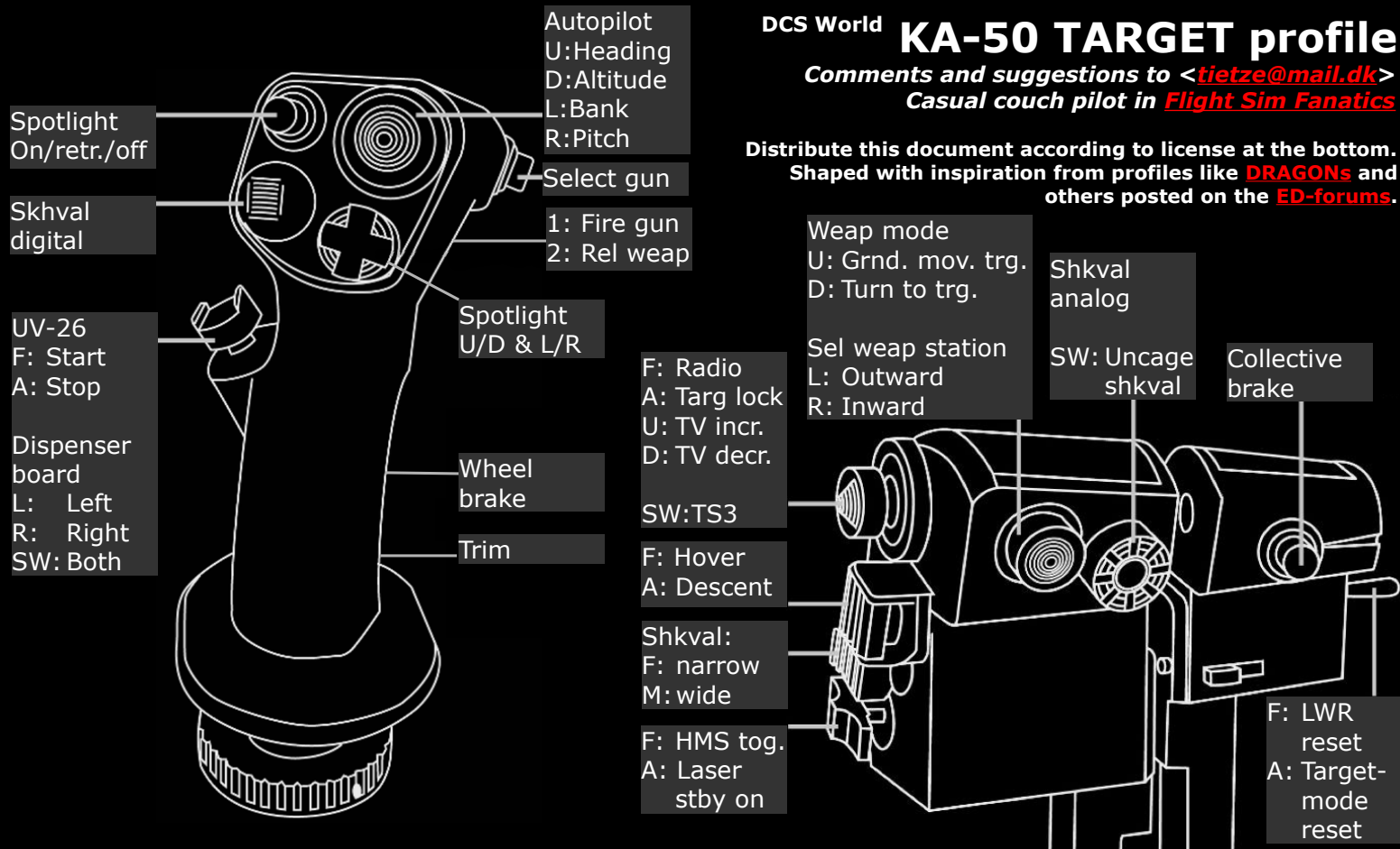


Comments and suggestions to <tietze@mail.dk>
Casual couch pilot in *Flight Sim Fanatics*

Distribute this document according to license at the bottom.
Shaped with inspiration from profiles like **DRAGONS** and others posted on the **ED-forums**.



Nb. To enable the UV-26 Dispenser Board (left/ right/ both) and Weapon Burst (short/long) functionalities you probably have to do a workaround as described here:
<http://forums.eagle.ru/showthread.php?t=90247>

Download TARGET profile

<https://dl.dropbox.com/u/2910357/fsim/Docs/KA-50-TARGET-profile.7z>

The profile mostly maps keyboard shortcuts and creates a slight S-curve (shown on page 3) to the joystick controller axis and a more aggressive curve for the mini-joystick axis used for Shkval slew.

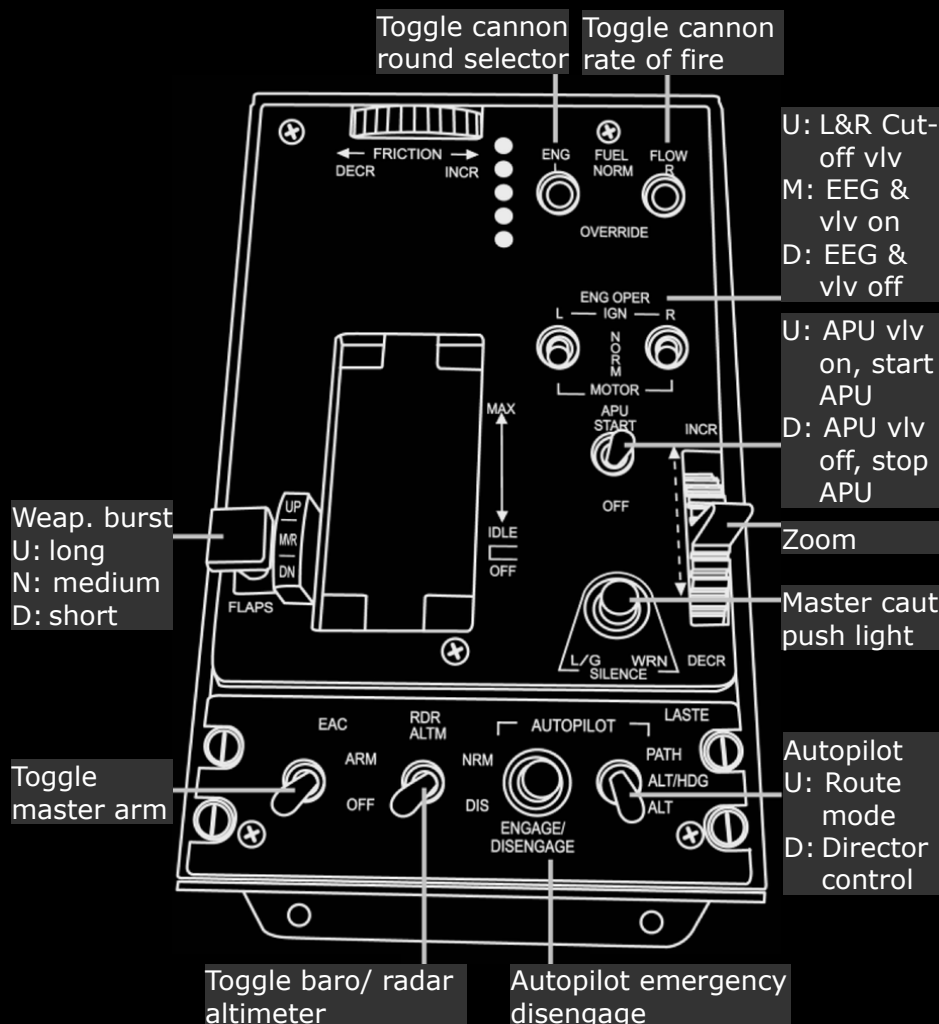
Collective:	Slider1
Zoom:	Slider2
Cyclic Pitch:	Joy_X
Cyclic Bank:	Joy_Y
Shkval horis:	Joy_RX
Shkval vertical:	Joy_RY

You will need to manually adjust/add the axes in DCS Black Shark and map the following buttons:

Gun Fire:	DX6
Release Weapon:	DX7

INS Countermeasures...	
UV-26 Select Both Boards:	DX5
UV-26 Select Left Board:	DX3
UV-26 Select Right Board:	DX4

INS Weapons Status...	
Burst Lenght Long:	DX1
Burst Lenght Short:	DX2



Helm. bright.	OSB01	OSB02	OSB03	OSB04	OSB05	Ingres. point Erase
	Target 1 Vehicle	Target 2 SAM	Target Other	Reference point	Send/ mem	
OSB20	Auto turn to target	Left MFCD			Num of seq.	OSB06
OSB19	Head on airborne target aspect				Num of flare in seq.	OSB07
OSB18	Airborne target				Delay btw. Seq.	OSB08
OSB17	Ground moving target				Amount/ program	OSB09
OSB16	Wep.sys.con Auto/man				Counter dispens. L/R	OSB10
IT23 bright.	Wingman 1	Wingman 2	Wingman 3	Wingman 4	Wingman All	IT23 con.
	OSB15	OSB14	OSB13	OSB12	OSB11	

Alt/ QFE	OSB01	OSB02	OSB03	OSB04	OSB05	HSI cour. L/R
	Lights: Navigation	Lights: Anti-collision	Lights: Rotor tip	Lights: Formation	Lights: Cockpit	
OSB20	Heat: pitot static & AOA	Right MFCD			SPU-9 radio com selector	OSB06
OSB19	Heat: pitot ramair & clock				Arm signal flares	OSB07
OSB18	Rotor de-ice				Datalink mode	OSB08
OSB17	Engine: de-ice/ dust-prot				Self-ID	OSB09
OSB16	Trimmer reset				Abris push	OSB10
	Abris 1	Abris 2	Abris 3	Abris 4	Abris 5	Abris turn
	OSB15	OSB14	OSB13	OSB12	OSB11	



