

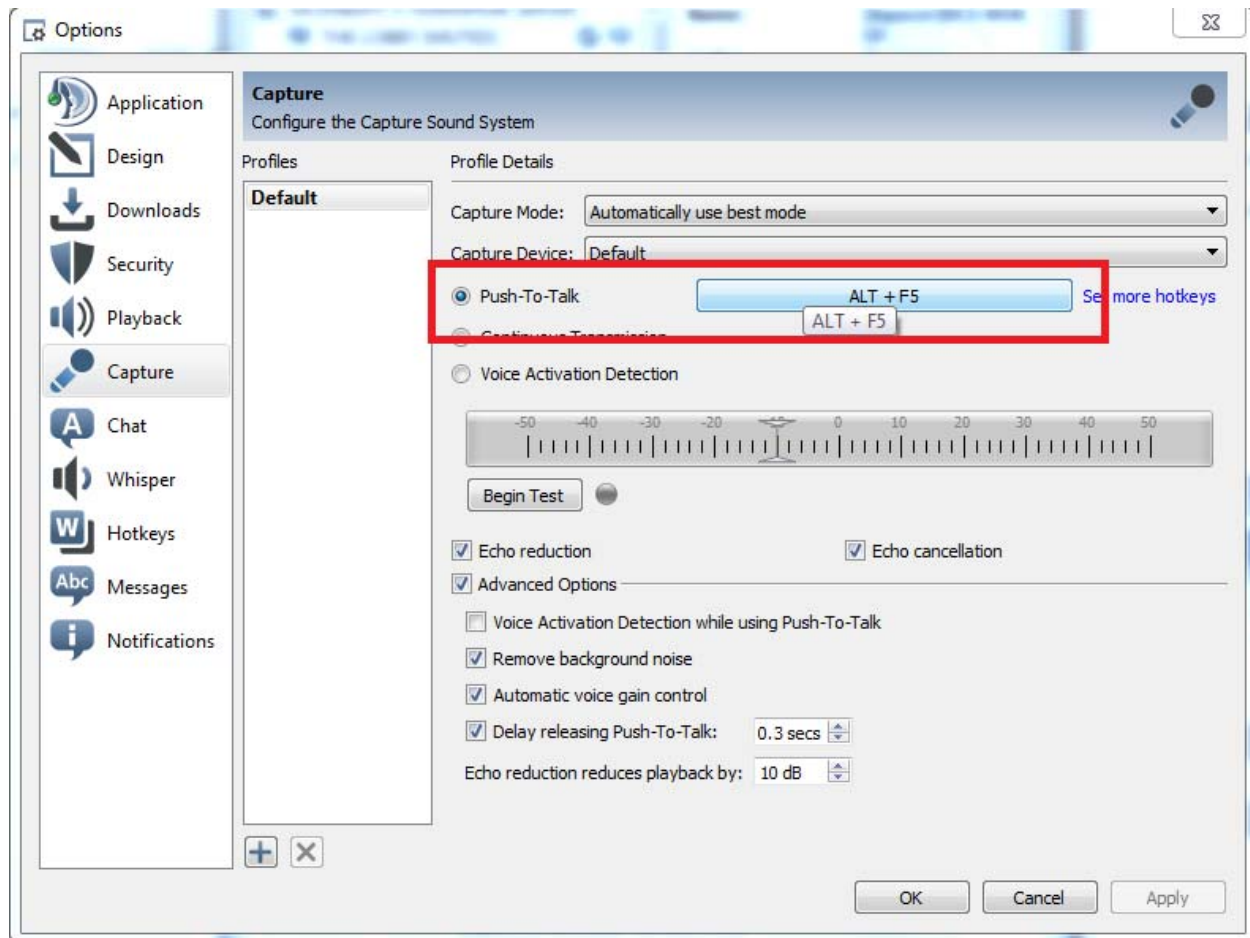
Ingame | Teamspeak Setup

This section we will go over key bindings ingame that will need to be added or changed.

1. **If you were using version 1.0 reset your ingame key bindings.**
2. Go to Options\Controls and look for the following Keyboard shortcuts to change:
 - a. "Unlock TWS Target" TO R_SHIFT + ENTER

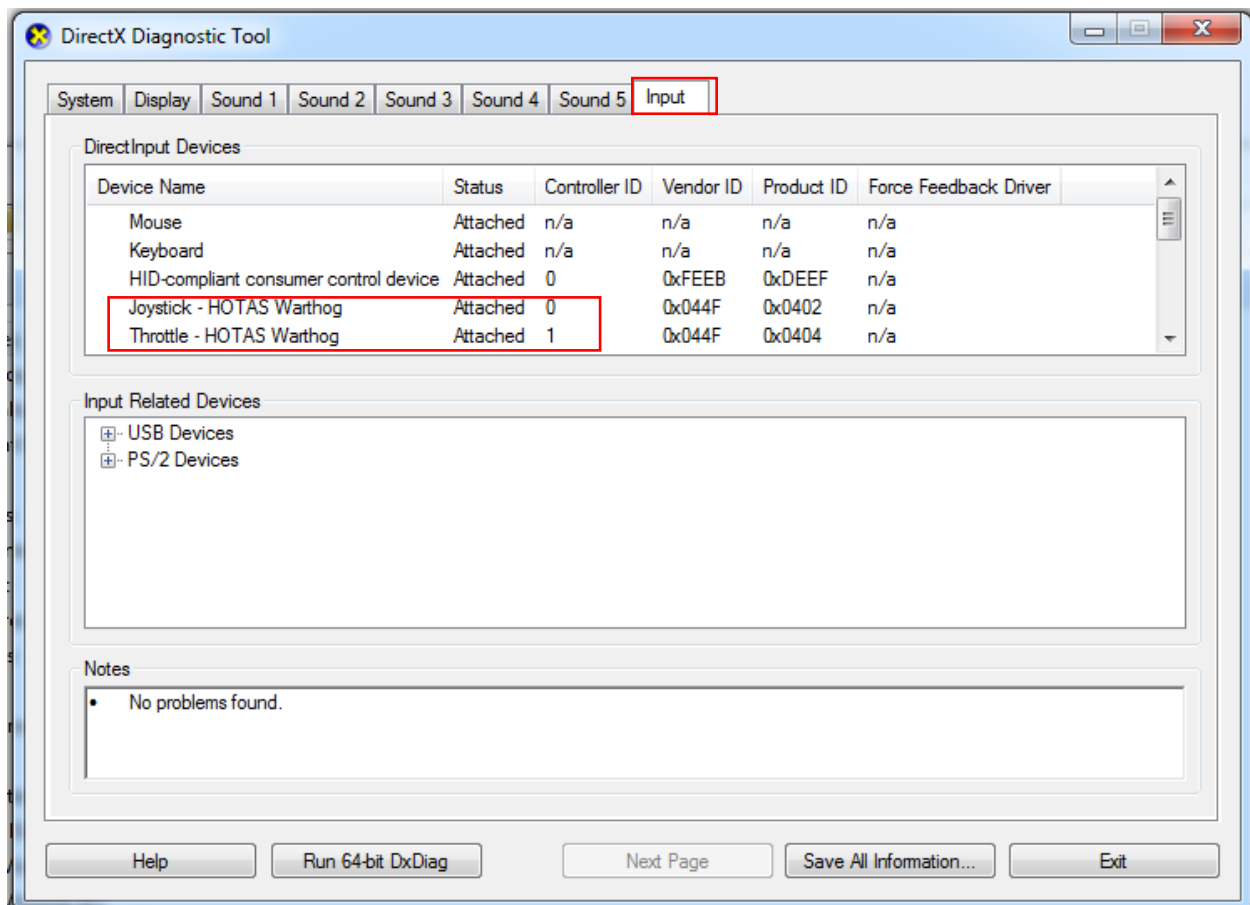
In this section we will be going over Teamspeak 3 setup.

1. With Teamspeak 3 open navigate to Settings\Capture and set your PTT to **L_ALT + F5**



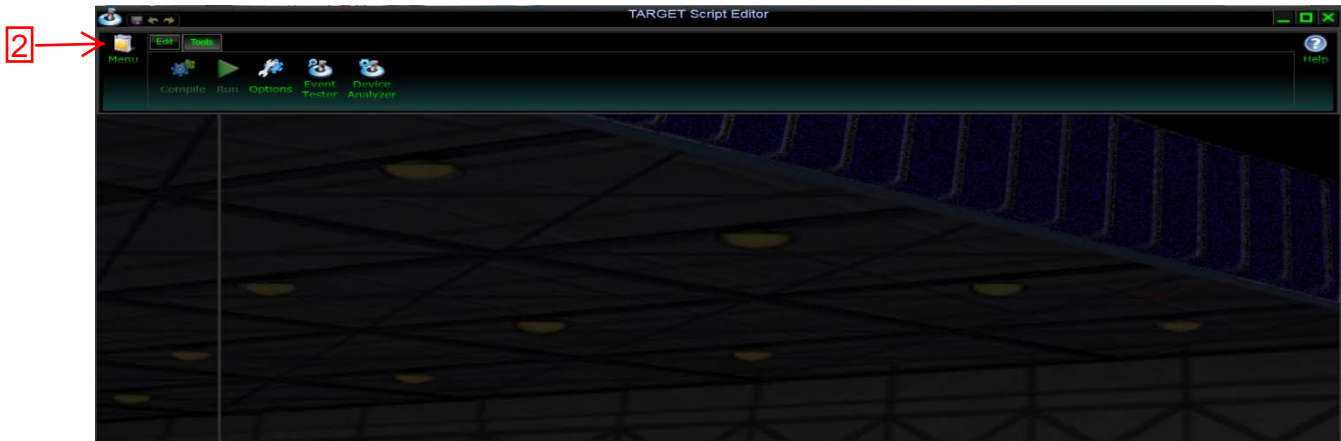
Installation – Windows 7

1. Make sure in DXDIAG you're Joystick is shown as ID0 and you're throttle as ID1.
 - a. Press Windows + R to bring up the RUN Window.
 - b. Type DXDIAG, and select the INPUT tab.
 - c. If the ID's are not like what is shown below try the following FIRST:
 - i. Go to the Control Panel.
 - ii. Select Hardware and Sound.
 - iii. Select Devices and Printers.
 - iv. Right click the HOTAS Joystick.
 - v. Select Game Controller Settings.
 - vi. Click Advanced.
 - vii. Select the HOTAS Joystick as the preferred device.
 - viii. Go back to the DXDIAG Window and check the ID's.
 - d. Follow the same step's for the HOTAS Throttle.
 - e. If you are unable to change the ID's by doing the first method try this:
 - i. Disconnect both Joystick and Throttle. Restart PC. Plugin Joystick and restart PC. Then Plug in the Throttle and check to see if the ID'S are correct.



Installation - TARGET

1. Run TARGET Script Editor.
2. Click MENU.
3. Click OPEN, and navigate to the location where you unzipped McKnight DCS F-15C TMWH 1.0.Zip
4. Click RUN.



Installation - TARGET

1. HOTAS Joystick should now be shown as:
 - a. Thrustmaster Combined or Thrustmaster Virtual Game Controller (root).
 - b. ID 0
 - c. Be sure to check at the DXDIAG window.

