

Rocket Mission Works

# SHORELINE DEFENSE

OVERALL CLASSIFICATION: SECRET

*Semper  
paratus*



# SITUATION

**05 Feb- 10:00 L**

Weather: Heavy Snow, Clouds @ 5kft

- Georgian modernization efforts have threatened Russian influence over the country, leading them to add additional pressure. Georgia announced a refitting of Kobuleti airfield to house newly acquired JF-17 multi-role fighters. Russia responded by threatening to destroy the base before it could be brought online. After Georgia pledged to resist Russian intimidation a Russia fleet of destroyers was sent to bombard the airfield infrastructure and prevent its reclamation. Briefing points
- Current Focus
  - Defense of Kobuleti airfield from an imminent Russian naval attack.
  - Demonstrate capabilities of JF-17 fighters in combat.

## Threat Assessment:

- Enemy aircraft last 24 Hr
  - Most common, least threatening: SU-27 @ Sochi
  - Most threatening, least common: SU-30 @ Sochi
- Enemy movements
  - Enemy frigate moving south from their home base for attack on Kobuleti.
- Current threat assessment
  - Aircraft: SU-27, SU-30 @ Sochi
  - AD: SA-11 @ Sukhumi
  - Naval: 1-2 Grisha Frigates.
- Mission Notes
  - Enemy UAV activity is also likely to help aid naval gunnery.

# MISSION

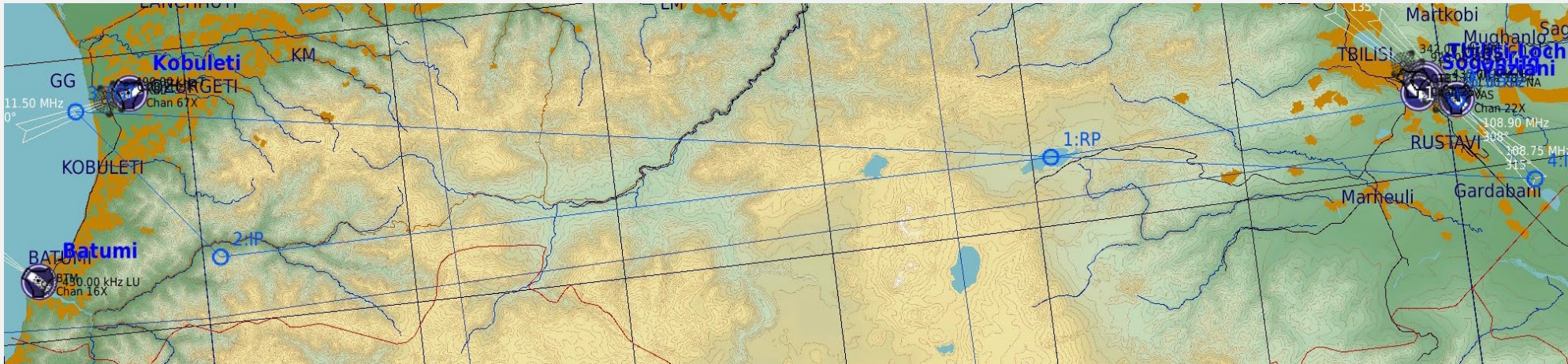
## Commanders Intent: Protection of Georgian sovereignty

- Brief
  - Russian frigates are expected to arrival this morning and begin direct fire attacks on Kobuleti AFD.
    - Expect UAV to support targeting of crucial airfield infrastructure.
  - Dodge flight will conduct anti-ship strike while enemy attention is focused on the airfield.
- Targets
  - 1-2x Grisha Frigates

# ROUTE

## ROE: Clear to engage any Russian forces.

- Dodge 1 depart Vaziani on RWY 31. Proceed west to WP1 where the flight will rendezvous.
- IP is WP2, fence-in and begin scanning for targets.
- Egress target area east direct to Vaziani; expect IFR conditions for recovery.



SECRET

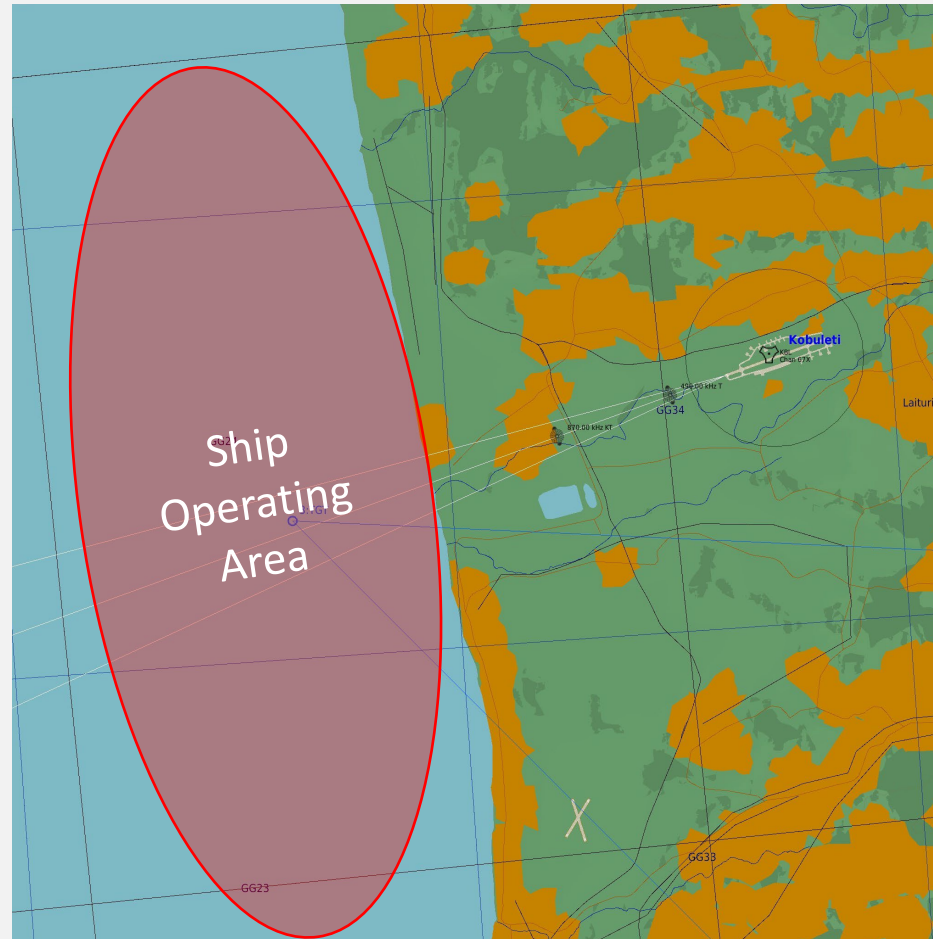
RMW

5

# TARGET

## Primary: Russian Frigates

- Scan for targets in the assessed operating area with the radar.
  - Maintain altitude above the cloud deck to hinder detection.
- At 10 NM from target descend at 15 degs until below the cloud deck.
- Acquire target with missile seeker; fire both missile in one pass.
  - Missile acquisition window: 45m
- Grisha equipped with ADA and short-range SAMs.



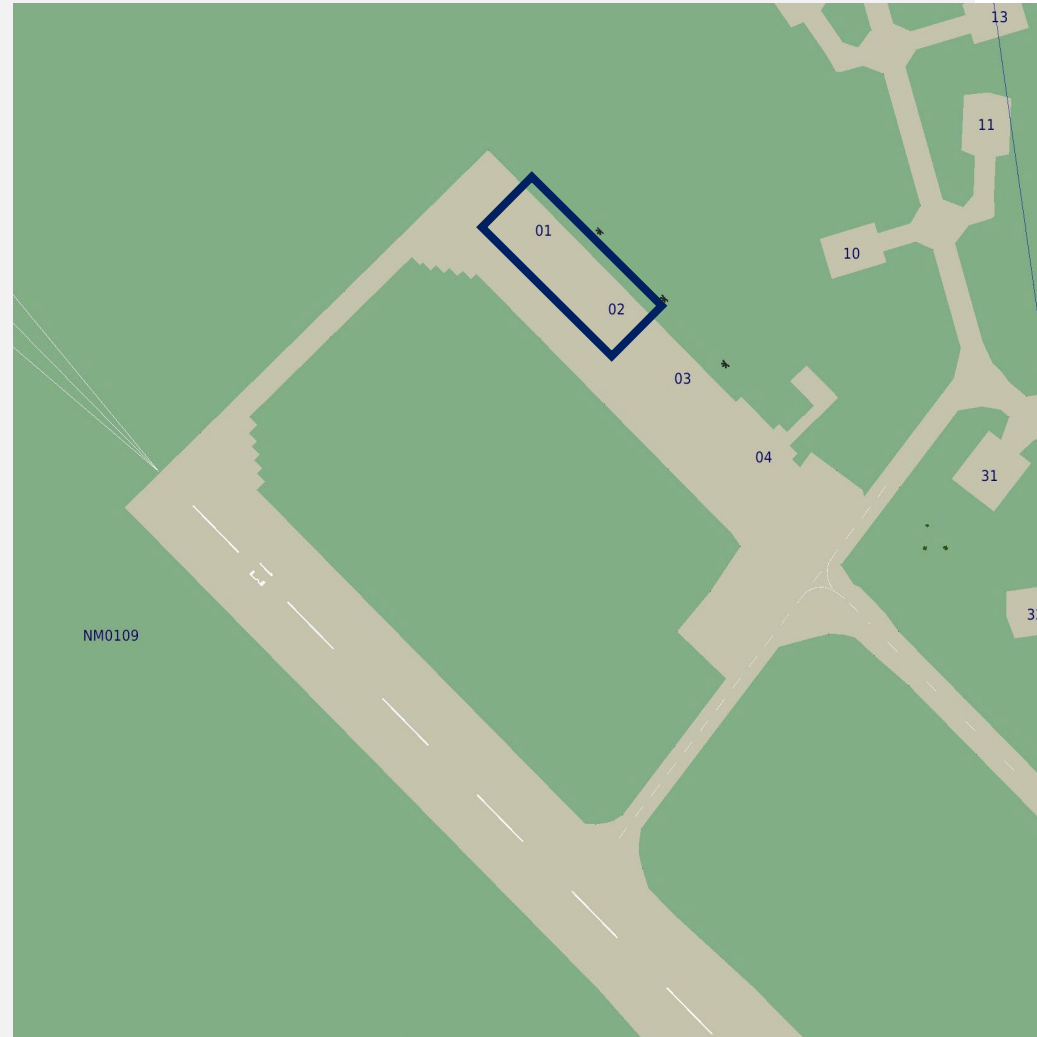
# DOMESTICS

**Vaziani AFD**

Winds: 14 kts @ 286

- TACAN: 22X
- Radio: 140 MHz
- Parking location: 01-02

*NOTAM: Be aware of civilian traffic from Tbilisi International.*



**SECRET**

RMW

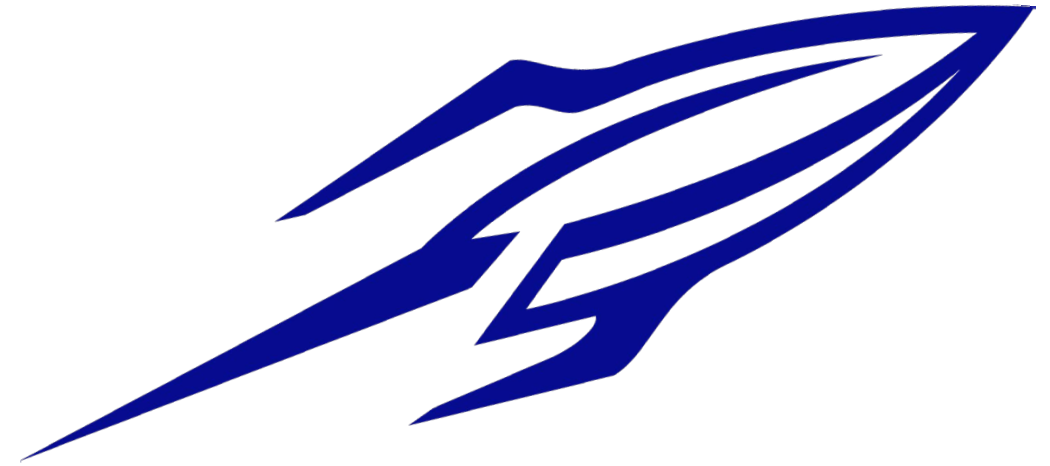
# LOADOUTS

## Package 1

- Dodge 1
  - 2x PL-5
  - 2x C-701T
  - 1x Bag



**QUESTIONS?**



Rocket Mission Works