

Rocket Mission Works

SHORELINE DEFENSE

OVERALL CLASSIFICATION: SECRET

*Semper
paratus*



SITUATION

05 Feb- 10:00 L

Weather: Heavy Snow, Clouds @ 5kft

- Georgian modernization efforts have threatened Russian influence over the country, leading them to add additional pressure. Georgia announced a refitting of Kobuleti airfield to house newly acquired JF-17 multi-role fighters. Russia responded by threatening to destroy the base before it could be brought online. After Georgia pledged to resist Russian intimidation a Russia fleet of destroyers was sent to bombard the airfield infrastructure and prevent its reclamation. Briefing points
- Current Focus
 - Defense of Kobuleti airfield from an imminent Russian naval attack.
 - Demonstrate capabilities of JF-17 fighters in combat.

Threat Assessment:

- Enemy aircraft last 24 Hr
 - Most common, least threatening: SU-27 @ Sochi
 - Most threatening, least common: SU-30 @ Sochi
- Enemy movements
 - Enemy frigate moving south from their home base for attack on Kobuleti.
- Current threat assessment
 - Aircraft: SU-27, SU-30 @ Sochi
 - AD: SA-11 @ Sukhumi
 - Naval: 1-2 Grisha Frigates.
- Mission Notes
 - Enemy UAV activity is also likely to help aid naval gunnery.

MISSION

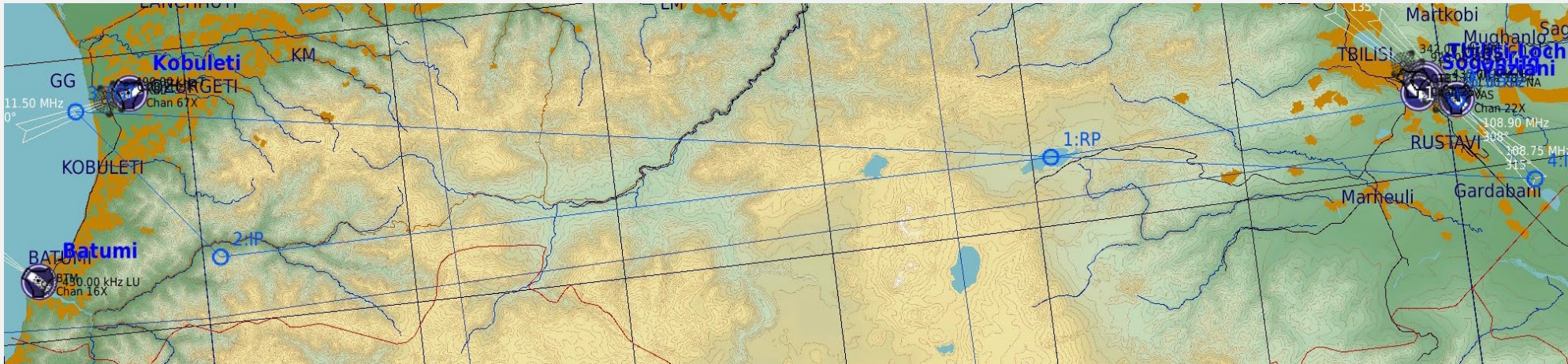
Commanders Intent: Protection of Georgian sovereignty

- Brief
 - Russian frigates are expected to arrival this morning and begin direct fire attacks on Kobuleti AFD.
 - Expect UAV to support targeting of crucial airfield infrastructure.
 - Dodge flight will conduct anti-ship strike while enemy attention is focused on the airfield.
- Targets
 - 1-4x Grisha Frigates

ROUTE

ROE: Clear to engage any Russian forces.

- Dodge 1 depart Vaziani on RWY 31. Proceed west to WP1 where the flight will rendezvous.
- IP is WP2, fence-in and begin scanning for targets.
- Egress target area east direct to Vaziani; expect IFR conditions for recovery.



SECRET

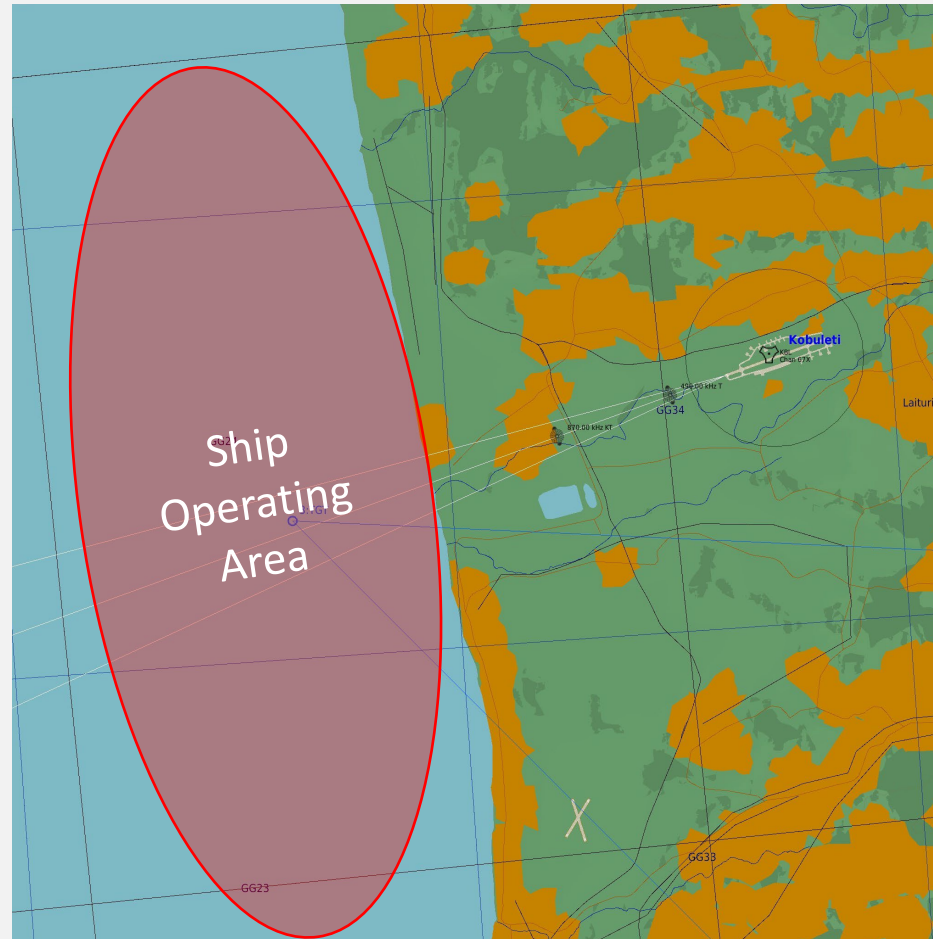
RMW

5

TARGET

Primary: Russian Frigates

- Scan for targets in the assessed operating area with the radar.
 - Maintain altitude above the cloud deck to hinder detection.
- At 10 NM from target descend at 15 degs until below the cloud deck.
- Acquire target with missile seeker; fire both missile in one pass.
 - Missile acquisition window: 45m
- Grisha equipped with ADA and short-range SAMs.



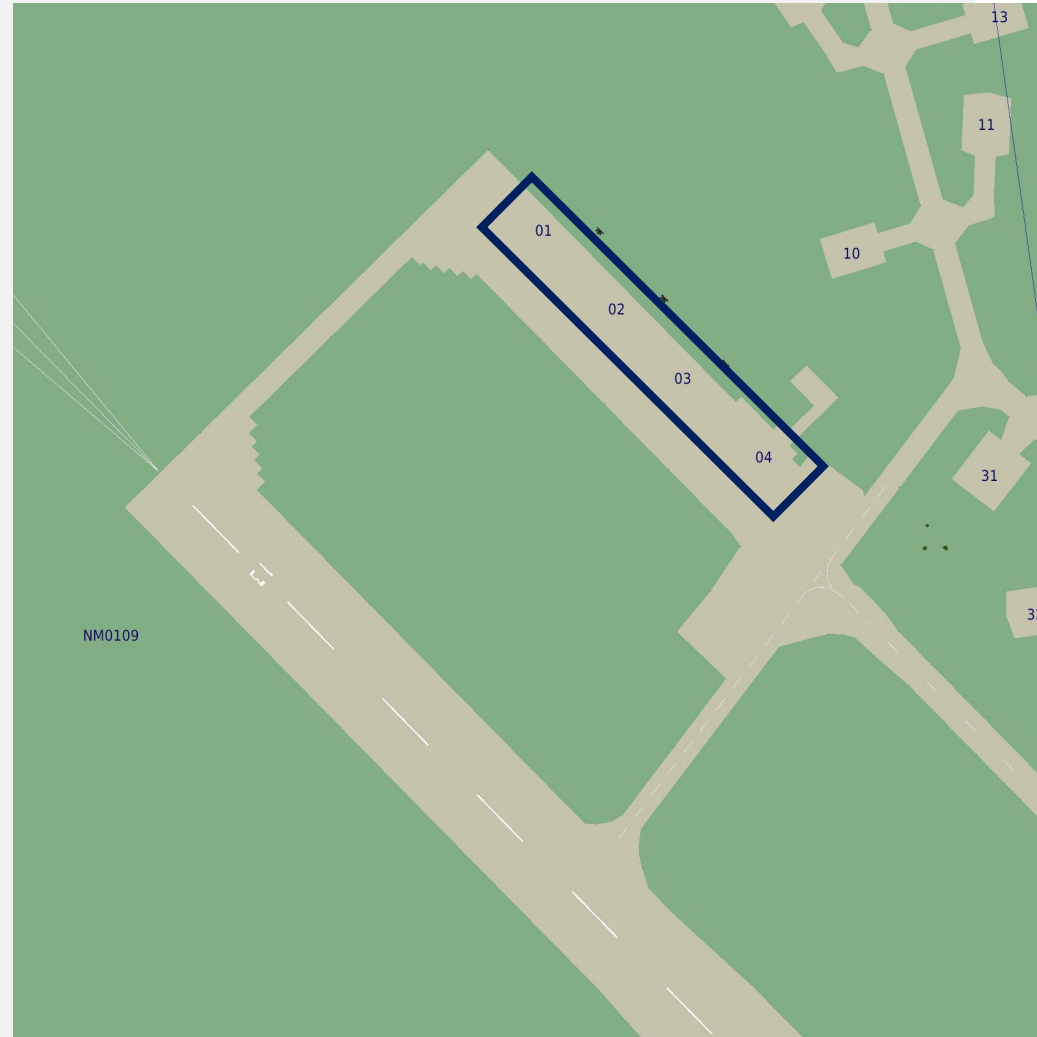
DOMESTICS

Vaziani AFD

Winds: 14 kts @ 286

- TACAN: 22X
- Radio: 140 MHz
- Parking location: 01-04

NOTAM: Be aware of civilian traffic from Tbilisi International.



SECRET

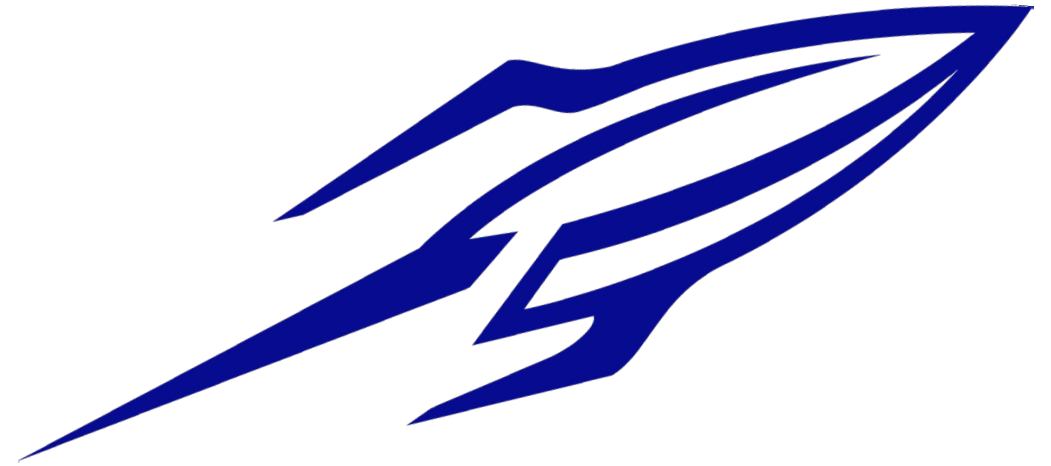
RMW

LOADOUTS

Package 1

- Dodge 1
 - 2x PL-5
 - 2x C-701T
 - 1x Bag

QUESTIONS?



Rocket Mission Works