



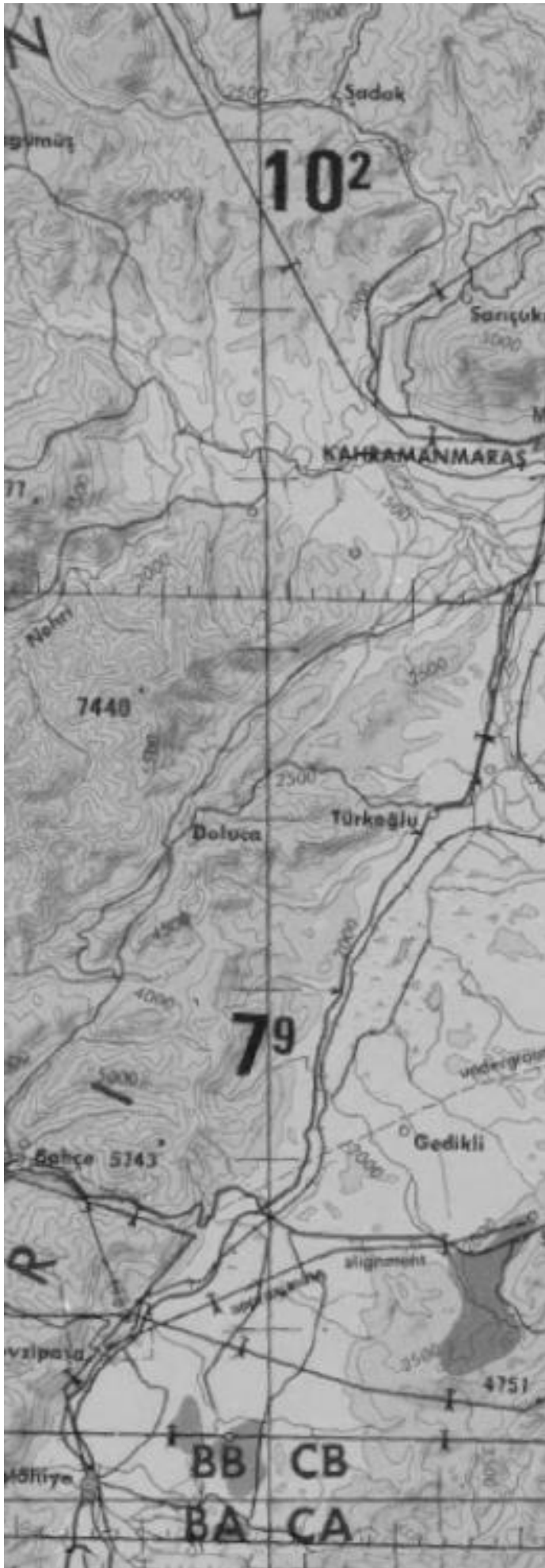
10 PERCENT TRUE

SEDLO

*On Call CAS*

*XR-352-P*

---



## TABLE OF CONTENTS

Mission Objectives.....	3
Weather and NOTAMS.....	5
Intelligence Update.....	7
Mission Planning .....	8
Threats .....	8
Rules of Engagment.....	9
Mission Data.....	10

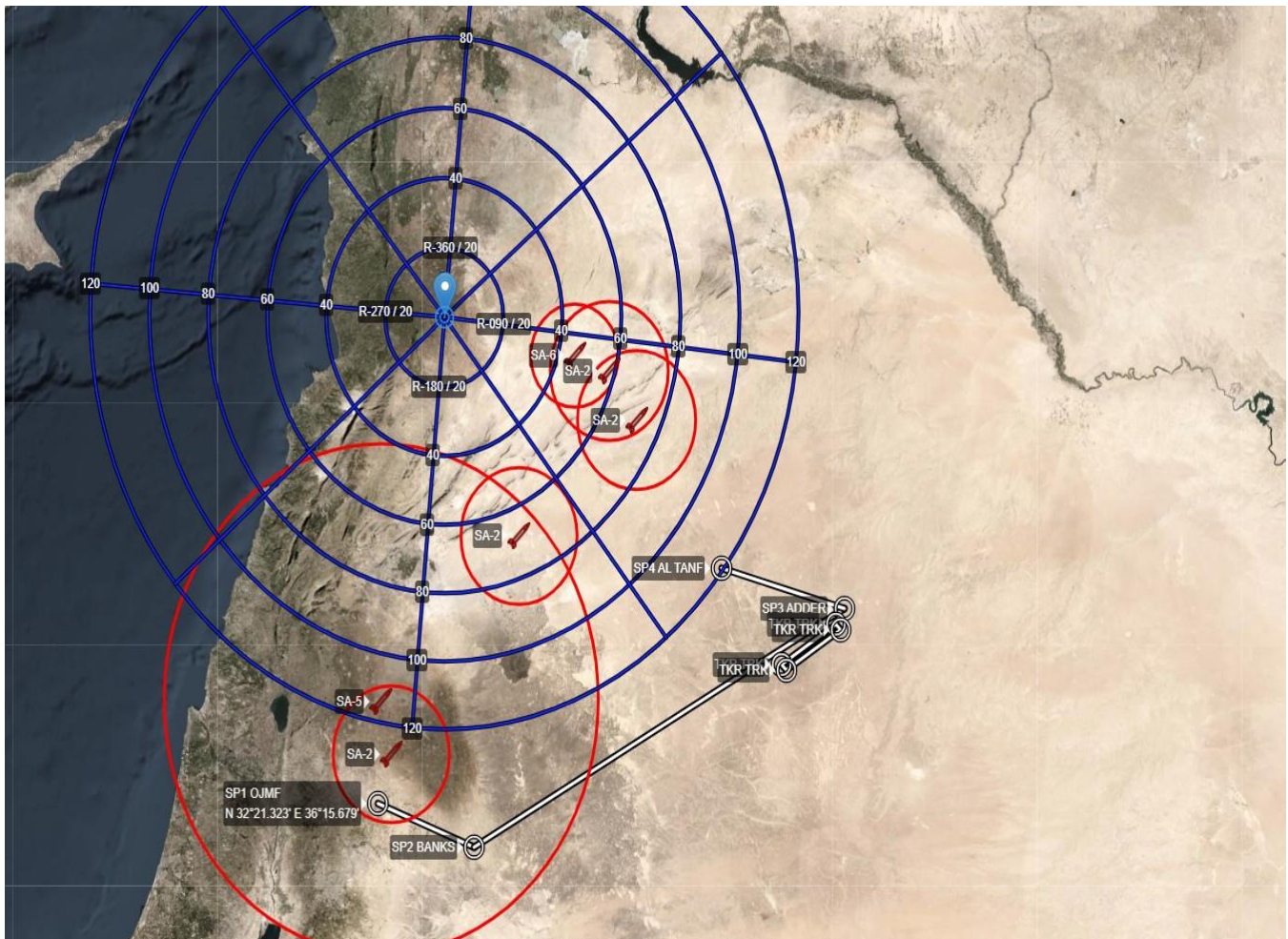




# MISSION OBJECTIVES

Today's mission (XR-352-P) has three main objectives:

- Provide On Call CAS support in the southern Section of the AO from 06:30z to 09:00z.
- Train with 93<sup>rd</sup> ARW out of Fairchild AFB, newly arrived in theatre.
- Familiarization with Local area and AO procedures



## On-Call CAS

[illegible]

## WEATHER AND NOTAMS

---

### OVERVIEW

A weakening high-pressure system overhead the southern AO will slowly give way to a warm front approaching from the Mediterranean. Weather throughout the AO is good VFR, light winds, visibility more than 10 miles and ceilings around 10,000ft.

### METAR/TAF

MUWAFFAQ SALT I AB (OJMS) METAR/TAF

METAR OJMS 060400Z 30012KT 10SM SCT100 10/1 Q1013 2992

TAF OMJF 060404 P10SM SCT100 FM 061000 30020KT P7SM HZ BKN100

H4 AIRBASE (IQ-0400) METAR/TAF

METAR IQ-0400 060400Z 34002KT 10SM SCT110 8/1 Q1013 2992

TAF IQ-0400 060404 P10SM SCT110 FM 061000 30030KT P3SM HZ BKN60

H3 AIRBASE (IQ-0020) METAR/TAF

METAR IQ-0020 060400Z 01011KT 10SM BKN100 6/1 Q1013 2992

TAF IQ-0020 060404 P10SM SCT110 FM 061000 30030KT P3SM HZ BKN60

### NOTAMS

C007 - OJMS TAXIWAY C, C3, C4 CLOSED UFN

C036 - OJMS TACAN (10X, AJQ) U/S FROM 0100Z-0400Z DEC.6

C991 - OJMS LIGHTING RWY 31 TO READ: AW INSTEAD OF AO

C216 – OJMS VHF TWR FREQ 119.7 U/S UFN. CTC TWR 121.0 UFN

C217 – OJMS VHF ATIS FREQ 129.75 U/S UFN.

---

## Operation Inherent Resolve

*On-Call CAS*

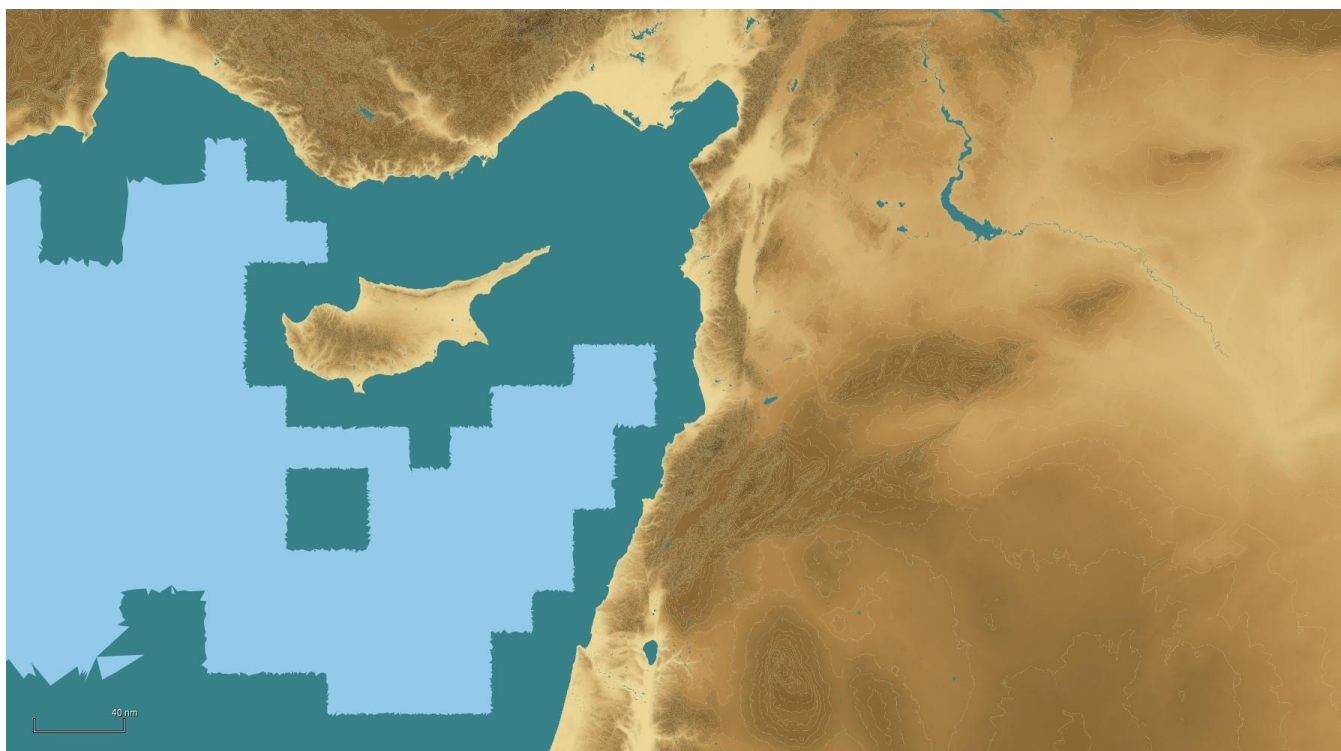
### LTAG WEATHER NOTES

**Flight Rules – VFR**

**Freezing Level – 4500**

**Contrail Level – 24,000**

**Birdwatch Level – Moderate**



## INTELLIGENCE UPDATE

---

### OVERVIEW 06 DECEMBER 2016 AT 01:00 ZULU

Daesh fighters are expected to make a final move on the town of Palmyra this morning after taking the airport late last night.

The Syrian Army has retreated to the Palmyra Army Depot and are expected to hold the base against the current Daesh attack. The Palmyra Army Depot is a suspected WMD storage area, and it's in Syria's best interest to secure these weapons from being compromised.

The State Department and OGA have reached out to the Syrian leadership to offer assistance in securing the WMD but all offers have been declined.

The COALITION partners have determined that WMD falling into the hands of DAESH is to be avoided at all cost.

---

The Russian Navy Task Force centered around the Cruiser VARYAG is expected to make port at Tartus this afternoon. Refueling and replenishment operations are expected to take 12 hours.

---

RIVET JOINT has detected indications of a new SA-3 battery located at TIYAS airbase. The proximity to the FEBA near Palmyra indicates that the Syrians intend to hold TIYAS in the face of any organized Daesh attack.

---

The new teletype link (POLECAT) between the Syrian Ministry of Defense, RUAFHQ and JACKAL is now operational. This development is meant to ensure positive communications between military leadership on all sides of the situation in Syria.

---

# MISSION PLANNING

---

### Mission Number – XR-352-P

Departure: VFR Departure runway 31 from C2 (8998 ft remaining)

Afterburner: Yes

Departure Instructions: VFR 31 Dep **LEFT** turn heading 180 maintain 6000.

Note: There is no ATC control outside the OJMS control zone. OJMS Control Zone extends in a 10nm radius up to 5500ft MSL

- Ford 51 will depart runway 31 with an immediate left turn to heading 180. Expect to be pushed to FOCUS control leaving 5000ft.
- Rendezvous and refuel with Texaco 51 at Steer Point 2 (ADDER).
- Take Up On-Call CAS with an orbit overhead Steer Point 3 (Al-Tanf)
- VUL time is 0630-0900 Z.
- Following VUL time, TEXACO 51 will be available for refueling if desired.
- Expect the visual approach and overhead break runway 31.
- When overhead Syrian Territory, ensure you are **EAST** of the 38 E line.

---

# THREATS

---

The Syrian Air Force has increased operations dramatically in the last 24 hours. Yesterday, they carried out multiple airstrikes in defense of the city of Palmyra. SU-24 and MiG-29 attacks were observed, with all operations out of the TIYAS airbase.

Russian SU-35 CAP aircraft have been observed in and around the port of TARTUS, which coincides with the expected arrival of their naval task force later today.

Syrian Air Force has MiG-29 on alert at TIYAS and SHAYRAT airbases, all believed to be in a 15-minute alert status.

Russian SU-35 are on 5-minute alert at Latakia Airbase.

---



## Operation Inherent Resolve

*On-Call CAS*

---

Syrian IADS network is still operational. Damascus is defended by long range SA-5 and SA-2 batteries.

SA-2, SA-3 and SA-6 batteries near the airbase at TIYAS are operational.

High volumes of AAA and MANPADS expected throughout the AO.

## RULES OF ENGAGEMENT

---

ROE Weapons Tight – Do not fire unless under direct attack or authorized via JACKAL or FOCUS control.

---

## MISSION DATA

10PCT					
FREQUENCY LINEUP					
PRIME			AUX		
01	287.5	ATIS	01	129.7	ATIS
02	363.6	GND	02	122.1	GND
03	250.4	TWR	03	129.4	TWR V
04	227.9	DEP	04	118.0	DEP
05	319.9	ARR	05	126.5	APP
06	337.3	SOF	06	141.6	JOKE
07	297.5	GCI-1	07	137.2	GCI1 B/U
08	382.8	GCI-2	08	143.425	GCI2 B/U
09	276.1	AMMN CTR	09	133.85	AMMN CTR
10	319.5	JACKAL UHF	10	137.6	JACKAL VHF
11	360.7	DAD	11	142.8	JOKE
12	315.1	SQN OPS	12	141.6	BASEOPS
13	277.6	FUNNY	13	139.4	FACT
14	282.2	FOCUS B/U	14	138.7	FOCUS B/U
15	310.525	BADGER	15	282.8	RESCUE PR
16	240.225	HQ NET-2	16	138.2	TAC-2
17	320.350	HQ NET-3	17	139.3	TAC-3
18	290.425	HQ NET-4	18	339.125	TAC-4
19	370.575	HQ NET-5	19	141.2	TAC-5
20	300.050	HQ WOD	20	140.9	SQN OPS

## Operation Inherent Resolve

On-Call CAS

10PCT INHERENT RESOLVE F-16						
MISSION DATA CARD						
P A C K A G E	CALLSIGN	COM1	COM2	D/L	TACAN	NOTES
	FORD 5	HQ-2	AUX18	LINK16	01Y/64Y	
A A R	CALLSIGN	TACAN	ALT	PRI	SEC	KY FILL
	TEXACO 51	51Y	24000	HQ NET-3		
A E W	CALLSIGN	TACAN	H/Q	PRI	SEC	KY FILL
	FOCUS	N/A	Y	HQ NET-2	240.225	1
T A R G E T	PRI CODE			SEC CODE		
	TOT			TOT		
	ALTIMETER	29.92		ALT.SET:		
	COORD			COORD		
	ELEV			ELEV		
	BMB WIND			BMB WIND		
	BINGO FUEL			BINGO		
S A R	CALLSIGN	TYPE	PRI	SEC	TACAN	SATCOM
	SANDY 1	A-10C	122.2			
	JOLLY 1	HH-60	122.2			

## Operation Inherent Resolve

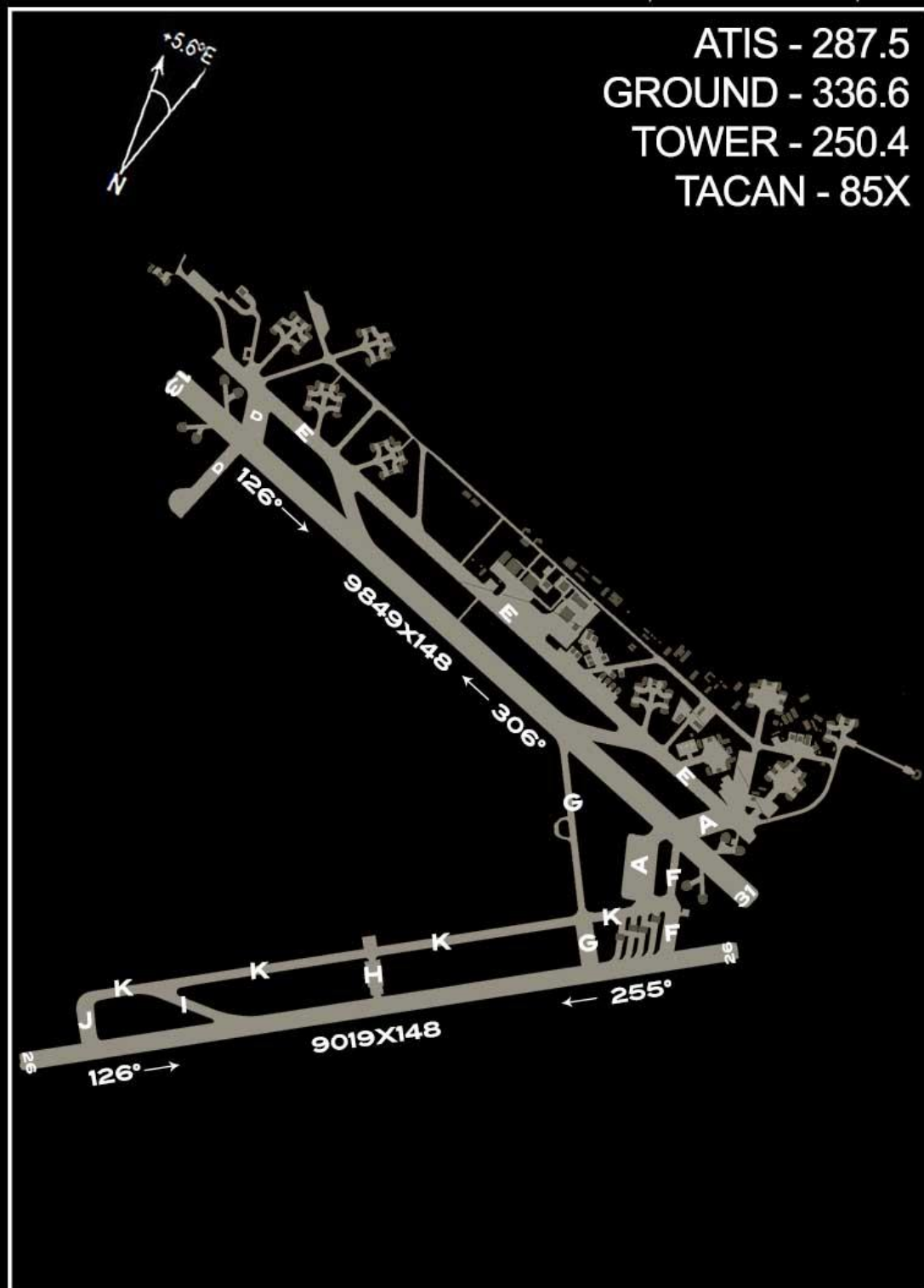
On-Call CAS

186564XX

AIRPORT DIAGRAM

MUWAFFAQ SALTI AIRBASE (OJMS)

MUWAFFAQ, MUWAFFAQ GOVERNATE, JORDAN



186564XX

AIRPORT DIAGRAM

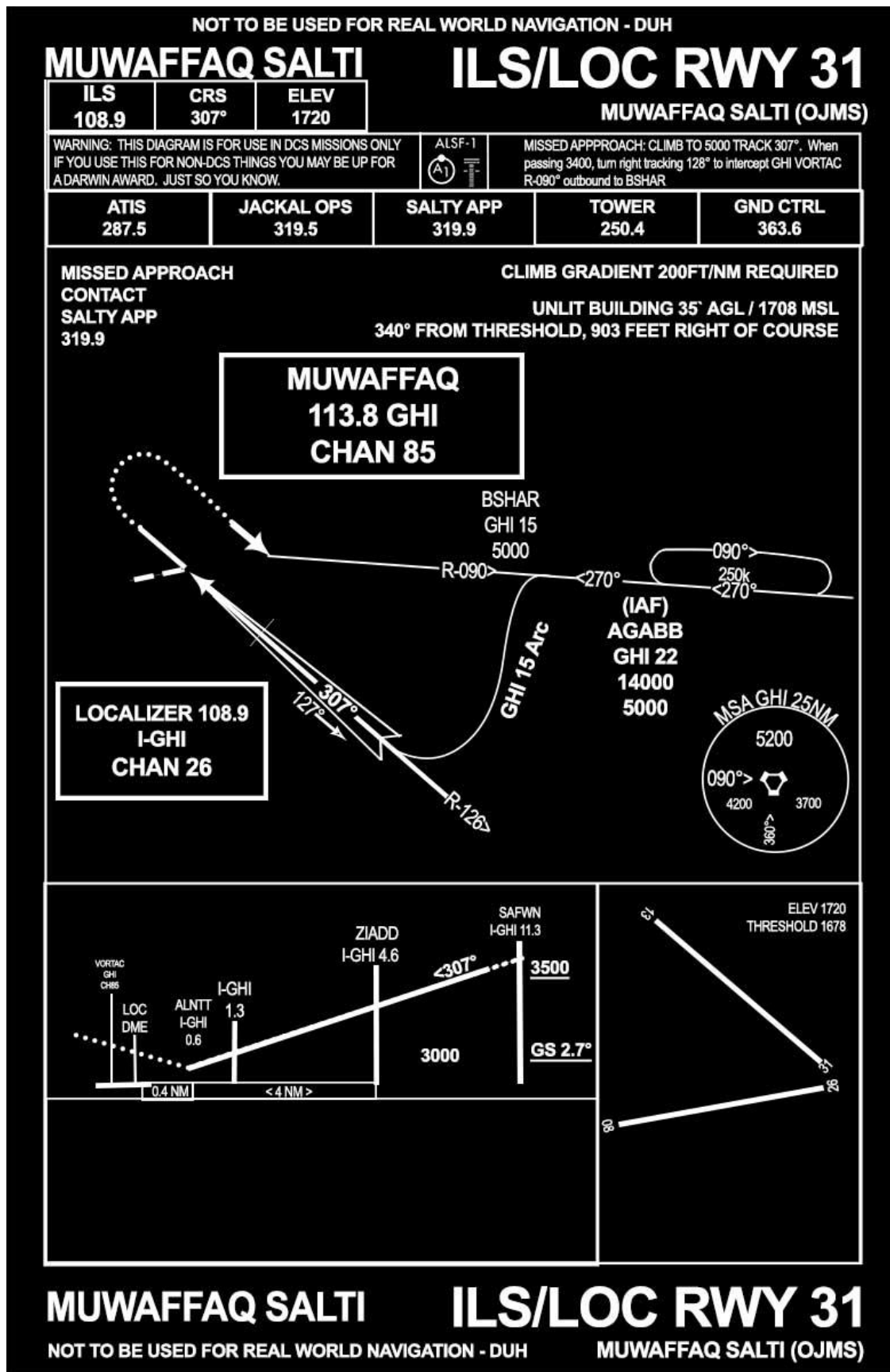
MUWAFFAQ SALTI AIRBASE (OJMS)

MUWAFFAQ, MUWAFFAQ GOVERNATE, JORDAN



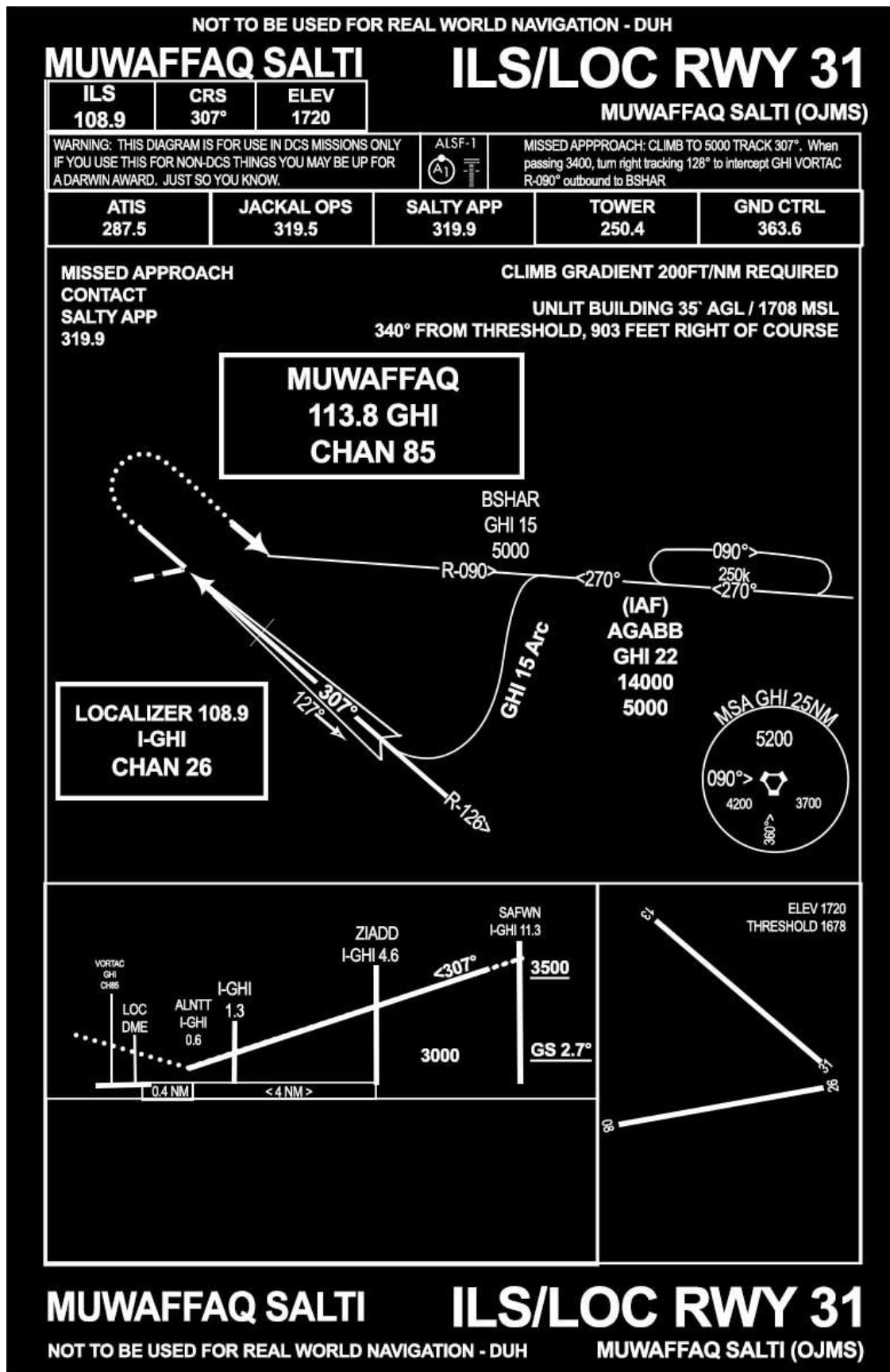
# Operation Inherent Resolve

On-Call CAS



# Operation Inherent Resolve

On-Call CAS



# Operation Inherent Resolve

On-Call CAS

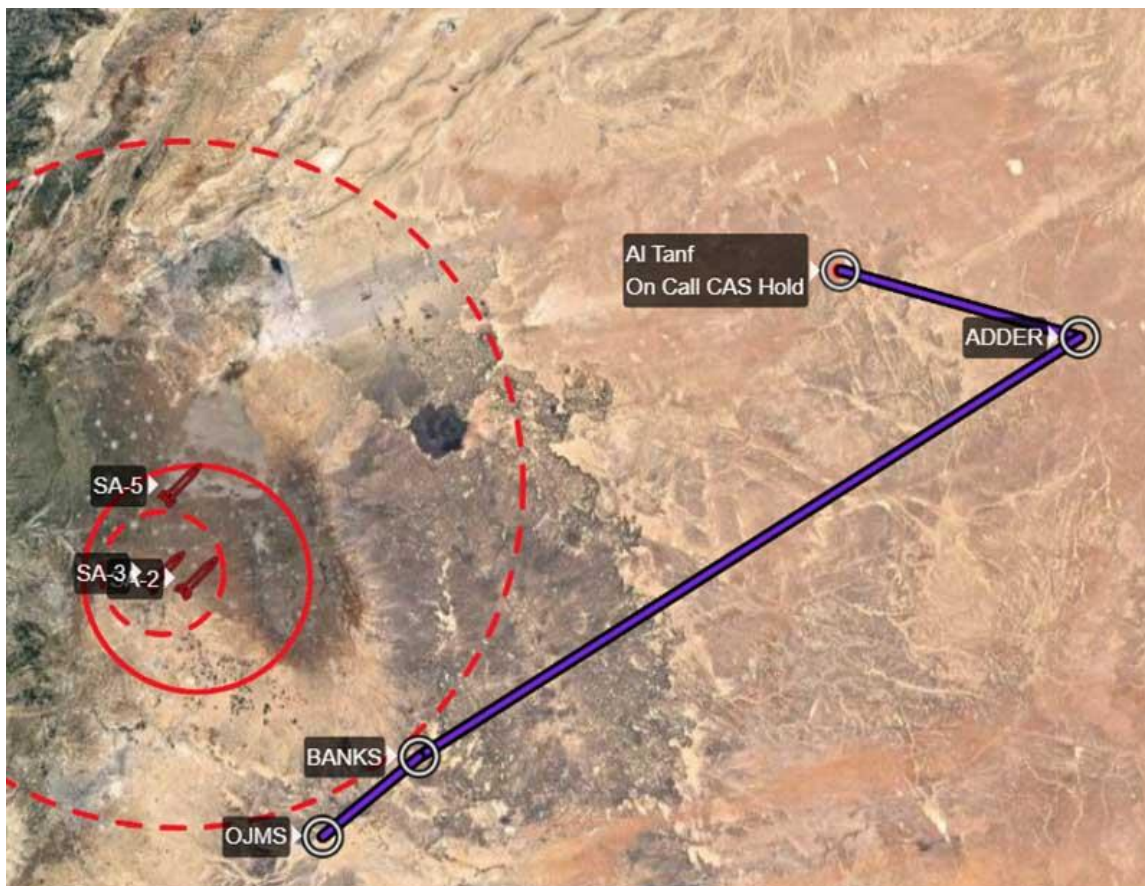
2014 JUNE 04 // F-15E DATA CARD // TOP SECRET // REL TO USA/CAN/JOR/TPSCIN										
CALLSIGN		MISSION	VFR J/B	ALT/JB	AIRSPACE	TIME	FREQ	MSN#		
FORD 51		XR-352-P			FOCUS HQ-NET-2 (16 ACTIVE)					
STEP	START	CHECK-IN	TAKEOFF	LAND	TEXACO 51 (17 ACTIVE)					
0445z	0515z	0520z	0530z	0800z	EARBUD 21 - OGA ROBOT 310.525 FILL-1					
TERM	TIME	MSN CH	FTR CH	VCS	NTR					
1-3A	Z	14	1 / 1	FD51	PKT-J					
ABORT	MIN-GO	AMA	ROT/NWLO/TO SPD		T/O DIST	LDG D/W	HVY D/W	SER/NWLO/SETOS		
140/93			166/180/200		5.5	5.0/6.5	8.5/10.9	205/210/221		
71	PILOT	WSO	TAIL	SPOT	RDR	LASER	M1	M2	M3	TCN
564	LOLA	NOTSO	221	47	1	1688	05		0501	01Y
564	NOTSO	VULTURE	221	47	3	1688	05		0502	64Y
TEMP	CONFIG			MAIN (HQ)		AUX	SAT			
10 c	19/2-AIM120/2-GBU10/4GBU12/21			CH.16 240.225		CH. 18 339.125	CH.9			
NOTES						PT	DESC	LIST PT/COORD		ELEV
20 SEC SPACING / AB-TO						1A	BANKS	N 32° 04.201' E 36°47.857'		/
						2A	ADDER	N 33°18.560' E 39°27.575'		24000
						3A	ALTANF	N 33°30.450' E 38°36.985'		24000
						4A	ADDER	N 33°18.560' E 39°27.575'		24000
						5A	BANKS	N 32° 04.201' E 36°47.857'		24000
						6A	HOMEPLATE	N 32°49.661' E 36°47.859'		2205
DIVERT - H3NW - 262.3 // 3X (H3N)										
DIVERT - H4 - 319.7 // TACAN 4x (JHR)										
SAR - 282.8 (15 AUX)										
HOMEPLATE 85X (GHI)										
						BE1	CROWN	N 34°28.829' E 36°55.790'		
TNKR	TYPE	TRACK	ALT	ARCT	FREQS	M2/M3	TCN	JB	NOTES	
TEX51	KC135	ADDER	24000	AMMAN CTR	CH.17 HQ	03/0377	51-Y			
AEW	TYPE	TRACK	ALT	ARCT	FREQS	M2/M3	TCN	JB	NOTES	
FOCUS	E-3C	ADDER	31000	AMMAN CTR	CH.16 HQ	03/0303				





## Operation Inherent Resolve

### On-Call CAS



10 PERCENT TRUE

ON CALL CAS

WP	FROM/TO	ALT	TRUE HDG	MAG HDG	DIST	G/SPEED	TIME ENROUTE	LAT/LONG
0	OJMS	/						N 32°49.661' E 36°47.859'
1	BANKS	24000	50	045	22.4	350	03:50	N 32° 04.201' E 36°47.857'
2	ADDER	24000	56	051	139	500	16:41	N 33°18.560' E 39°27.575'
3	AL TANF	24000	285	280	37	400	05:33	N 33°30.450' E 38°36.985'
4	ADDER	24000	105	100	37	500	04:26	N 33°18.560' E 39°27.575'
5	BANKS	24000	238	233	139	500	16:41	N 32° 04.201' E 36°47.857'
6	OJMS	/	229	224	22.4	350	03:50	N 32°49.661' E 36°47.859'
7								
8	BULLSEYE							N 34°28.829' E 36°55.790'



## ACKNOWLEDGEMENTS

---

I would like to thank the following people for providing voice-over work.

HoneyBadger

T-Money

DeadMike

Mace

pooledh18

Florence

nucks\_404\_epe

=Foxtrot=

Paladin1CD

HoshoDesu

VULTURE

Apologies if I've left anybody out!

---